



THE CHESS

October-December 2022

Vol. 95, No. 4

CORRESPONDENT

Published by the Correspondence Chess League of America

Serving the North American correspondence chess community since 1909

GM Jon Edwards

32nd World Correspondence Chess Champion

Interviewed by Maurice Carter

I am pleased to be able to conduct an interview with Jon. He is only the third American to win the Championship, the other two were Hans Berliner 5th, and Vytas Palciauskas 10th. I want to thank Jon for giving us some insights into what it took to win the Championship.

MC: Can you please provide us with a little on your background?

JE: Raised in West Hempstead, NY and then Acton MA. Started playing tournament chess around New England. I went to Princeton University (AB 1975) where I was President of the Chess Club for three years, and then off to Michigan State University (MA, PHD 1988) in African Economic History. I left academia to work at BYTE Magazine in New Hampshire, where I started playing chess again. Then I went back to Princeton University where I was AVP for Computing and Information Technology for 14 years, and then Coordinator of Institutional Communication for 10 more years. Along the way, I ran for local office and won two terms on our Township Committee, and even served as Mayor of Hopewell NJ, for a year. Those six years represented another break in my chess. I retired in 2010 to teach chess and to play correspondence chess full time.



GM Jon Edwards

MC: How did you first become acquainted with chess?

JE: I was taught first by my father but with key lessons from my great Uncle Joseph Platz, who was taught by Lasker. I got mono in 4th grade, and to cheer me up, my dad bought me my first chess book, *Great Moments in Modern Chess* by Reuben Fine. A week later, he asked how I was doing with the book, and was impressed when I responded that I had finished it. He didn't believe me at first until I stated telling him about all the games in the book. After that, he bought me another chess book every week.

MC: Most people start with over the board chess (OTB). Were you an active OTB player?

JE: As a teenager, I lived for the next tournament, and I had decent early results, reaching expert by my college days. I didn't play for 10 years in graduate school and in fact, my wife Cheryl and I got married without her knowing that I played!

MC: How were your results playing OTB chess?

JE: Decent, but I was no prodigy. I just loved the game. After I won the US Correspondence Championship in 1997, I bragged to a fellow Princeton grad that I must have been the first Princeton grad to win a US Championship. To my chagrin, I learned that Edgar McCormick '37 had won the US Amateur Title. So, I played in the US Amateur and tied for first, making me, I think, the only player to win a US Championship in both OTB and in Correspondence. I started playing correspondence chess in American Postal Chess Tournaments (APCT) purely to help improve my OTB play. It did that, but correspondence chess soon became a passion unto itself. When Cheryl and I started a family, I wanted

Continued on page 89

Contents

GM Jon Edwards - 32nd World Champion by Maurice Carter.....	front cover
President's Message.....	87
Thank You CCLA Donors.....	87
What's the best move? by Arthur Holmer.....	88
Adventures in Expertland by Bryce Avery.....	96
Readers' Games.....	98
T. D. Reports by Jerry Honn.....	104
Ratings and Results.....	105
Chess Correspondent Annual Index.....	108

The Chess Correspondent: Publication Number USPS 102-820 and ISSN 0009-3327 is published quarterly, four issues per year. Periodical postage paid at Owings Mills, MD 21117 and additional mailing offices. Postmaster: please forward all changes of address to CCLA, 1154 Dayton Drive, Galesburg, IL 61401-1313, USA.

No parts of this publication may be reproduced without the express written permission of the Correspondence Chess League of America. The entire contents are copyright 2020, the Correspondence Chess League of America. All rights reserved

Advertising rates available upon request from the CCLA, 1154 Dayton Drive, Galesburg, IL 61401-1313, USA. CCLA reserves the right to reject any material submitted for publication. Advertisements appearing in *The Chess Correspondent* do not have the guarantee or warranty, expressed or implied, of the Correspondence Chess League of America.

Manuscripts: CCLA invites the submission of unsolicited manuscripts for publication, but accepts no responsibility for their return unless accompanied by a SASE. Address all manuscripts to be considered for publication to, Joseph Ganem, Editor, *The Chess Correspondent*, 236 Chartley Drive, Reisterstown, MD 21136. or email: ganem@loyola.edu

CCLA: Founded in 1909, The Correspondence Chess League of America is the oldest correspondence chess organization in the USA. A non-profit organization, CCLA is governed by member-elected officials and member-approved constitution and Bylaws. CCLA members receive free subscription to *The Chess Correspondent*. Members of CCLA are also entitled to participate in international correspondence chess through ICCF-US.

Membership Information: Regular membership rates are: one year \$20.00; two years \$38.00; three years \$54.00; five years \$80.00; ten years \$140.00. Family (one magazine) \$30.00 per year. Electronic membership (receiving the magazine by email) is \$12 for one year, \$22 for two years and \$30 for three years. Dues payments are not refundable. Send dues to the CCLA, 1154 Dayton Drive, Galesburg, IL 61401-1313, USA.

Subscription Information: Non-members may subscribe to *The Chess Correspondent* at the following rates: USA \$20.00 for 2nd class mail, \$12.00 for everyone by email. Payments should be sent to the CCLA, 1154 Dayton Drive, Galesburg, IL 61401-1313, USA.

CCLA Officers: President: Ron Nurmi, 1424 E Walnut Street #4, Des Moines IA 50316, email: rnurmi@centurylink.net (2023); Vice President: Brian Hey, email:chaneyhey@yahoo.com (2023); Secretary-Treasurer: Douglas Hadley, 1789 S Dover Pointe Rd, Henrico, VA 23238, email: dhadley615@gmail.com (2023); .

CCLA Directors: Maurice Carter, 438 McIntire Dr., Fairborn, OH 45324-5525, email:mcarter64@roadrunner.com (2023); Jose Jimenez, email: pacconi@sbcglobal.net (2023).

Nominating Committee: Jay Simonson, 391 Carol Ave., Idaho Falls, ID 83401 email: rooknjay@yahoo.com. Duane Catania dhcat48@msn.com.

BUSINESS OFFICE: 1154 Dayton Drive, Galesburg, IL 61401-1313, USA. email: jerryhonn@yahoo.com. Internet: www.serverchess.com. Send tourney entries, game results, time complaints, adjudication requests, prize information, membership renewals, changes of address.

CCLA Server TD & Server Team Coordinator: Jerry Honn, email: jerryhonn@yahoo.com

CCLA Postal TD & Postal Team Coordinator: Jerry Honn, 1154 Dayton Drive, Galesburg, IL 61401-1313, email: jerryhonn@yahoo.com

ICCF-US Secretary: Jason Bokar, email: napz@iccf.com.

CCLA Facebook Page: John Thommen, email: korchnoi1964@gmx.com

CCLA Website: <https://www.serverchess.com>

President's Message

Postal chess games and tournaments have been an important and traditional offering of the Correspondence Chess of America since our founding in 1909. Unfortunately, in recent years the Board of Directors have noted a steady decline in the number of members who still wish to enter and play chess via traditional mail correspondence, resulting in unacceptable (6-9 months) waiting times to fill sections. There are many reasons for this change, not the least of which has been the increasing cost of US mail services and the decrease in mail delivery standards. More and more players have switched to server play over the years. As a result, the Board has taken the following steps to revise the number and complexity of our postal correspondence chess offerings for our members.

Beginning in 2023, CCLA will offer only following three postal correspondence chess events: 1) our traditional **Annual Postal Championship** open to the 11 highest rated members who submit entries by the deadline, 2) our popular **Challenge Matches** arranged between individual players, and 3) a new postal event, **Postal En Prise**, which will be a one round prize event, semi-class with four players, sections of which will be filled through the year as entries are received. For further details on these postal events, including entry fees, entry dates and prizes offered, please see announcements elsewhere in this magazine, or on our website, <https://www.serverchess.com>.

As a result of these changes, CCLA's Board has decided that the following Postal Tournament events will not be offered beginning in 2023, due to lack

of interest and insufficient entries: a) Grand National; b) North American Class Championship; and c) Social Championship. If you are already playing in a section of these events currently underway, please continue to play your games to their conclusion. Existing events will be finished, and prizes awarded when final rounds are completed. If you entered one of these cancelled events but have not yet received a playing assignment, your entry fee has been credited to your account.

The Postal Team Championship scheduled for June 2023 will be held only if enough entries are received by the entry date and enough captains are available to fill at least three teams.

The Board regrets taking these actions for those members still interested in postal chess, but we believe that we will have enough events and playing opportunities for those individuals who continue to wish to play traditional correspondence chess.

Elsewhere in this magazine is a list of donors who have generously given to the Correspondence Chess League of America during this year. We have not recognized our donors for far too long and we will begin to include the names of all donors in our annual year end issue. Our donors help make up for the deficiency in operating funds needed to provide you with this magazine and other services which we offer to our members.

Finally, I also wish to thank all my fellow officers, directors and other individuals who generously gave of their time, energy and talents this last year to support the League and its programs. Without our staff, there wouldn't be a Correspondence League of America.

Thank You CCLA Donors

Over the past year, several generous members have contributed funds to the Correspondence League of America, either through direct donations via check or PayPal, or by donating credits from their Member Accounts. Our donors are greatly appreciated and help CCLA pay for services which are not completely covered by membership dues or tournament entry fees, such as advertising to attract new members. The following individuals are recognized as our donors to CCLA for the period January 1, 2022 to September 31, 2022.

King Level (greater than \$1000)

Brian Hey

Queen Level (\$500 to \$999)

Rook Level (\$100 to \$499)

Michael C. Callinan

Bishop Level (\$50 to \$99)

Lev Lamech

John R. Menke

Knight Level (\$25 to \$49)

Jim Vaughan

Pawn Level (\$1 to \$25)

Michael Hansen

James Clancy

If you are interested in donating to the Correspondence League of America and supporting our programs further, please send a personal check via mail to CCLA c/o Doug Hadley, 1789 S Dover Pointe Rd, Henrico, VA 23238. If you have excess credits in your CCLA Account, you may also arrange to transfer all or part of your credits to the CCLA general funds and list you as a donor. To arrange a transfer of credits from your CCLA Account, please contact Treasurer Doug Hadley at cclatreasurer22@gmail.com. We will publish a list of our donors in next year's Oct-Dec *Chess Correspondent*.

BEST GAMES ENTRIES NEEDED!

Entries to the 2022 Best Games Contest should be sent to Bryce Avery, Avery Enterprises, Inc., 3084 Blue Quail Court, Grand Junction CO 81504. Email: bda@averyenterprises.net. Please submit only games played in CCLA events and include the section number. Games should be completed in 2022. No more than three games per person. Deadline: January 31, 2023.

MOVING?

CCLA needs six weeks advance notice for changes of address. There will be a \$3.00 charge for each replacement copy of *The Chess Correspondent*.

Statement of Ownership, Management, and Circulation

1. Publication Title: The Chess Correspondent
2. Publication Number: 102-820
3. Filing Date: September 29, 2022
4. Issue Frequency: Quarterly
5. Number of Issues Published Annually: 4
6. Annual Subscription Price: \$20
7. Complete Mailing Office of the Publication: 236 Chartley Drive, Reisterstown, MD 21136-2306
8. Complete Mailing Address of Headquarters or General Business Office of Publisher: 1154 Dayton Drive, Galesburg, IL 61401-1313
9. Publisher: Correspondence Chess League of America, 1154 Dayton Drive, Galesburg, IL 61401-1313; Editor/Managing Editor: Joseph Ganem, 236 Chartley Drive, Reisterstown, MD 21136-2306
10. Owner: Correspondence Chess League of America, 1154 Dayton Drive, Galesburg, IL 61401-1313
11. Known Bondholders, Mortgagees, and Other Security Holders: None
12. Tax Status: The purpose, function, and nonprofit status of this organization and the exempt status for federal income tax purposes has not changed during preceding 12 months.
13. Publication Title: The Chess Correspondent
14. Issue Date for Circulation Data Below: July-September 2022
15. Extent and Nature of Circulation:

	Average No. Copies	No. Copies Single
a. Total Number of Copies (net press run)	180	180
b. (1) Outside County Paid/Requested Subscriptions stated on PS Form 3541	139	133
b. (2) In-County Paid/Requested Subscriptions stated on PS Form 3541	0	0
b. (3) Sales Through Dealers and Carriers, Street Vendors, Counters Sales, and Other Paid or Requested Distribution Outside USPS	0	0
b. (4) Requested Copies Distributed by Other Mail Classes through the USPS	27	33
c. Total Paid and/or Requested Circulation	166	166
d. Non-requested Distribution	0	0
e. Total Non-requested Distribution	0	0
f. Total Distribution	166	166
g. Copies not Distributed	14	14
h. Total	180	180
i. Percent Paid and/or Requested Circulation	100%	100%

16. Electronic Circulation:

	Average No. Copies	No. Copies Single
a. Paid Electronic Copies	105	102
b. Total Paid Distribution	271	268
c. Total Distribution	271	268
d. Percent Paid (Print + electronic)	100%	100%

17. Publication of Statement of Ownership for a Requester Publication is required and will be printed in the October-December 2022 issue of this publication.

18. I certify that all information furnished on this form is true and complete.

-- Joseph Ganem, Editor

What's the Best Move?

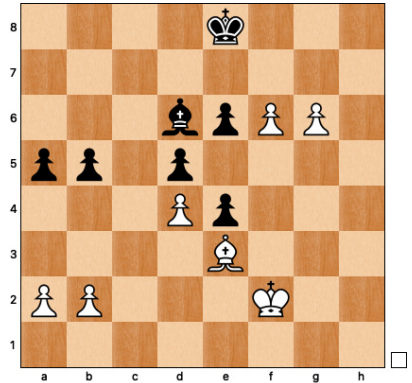
by Arthur Holmer

Answers on page 109

1. Zarges-Catania

2021 Spring Server Series

Section S10519

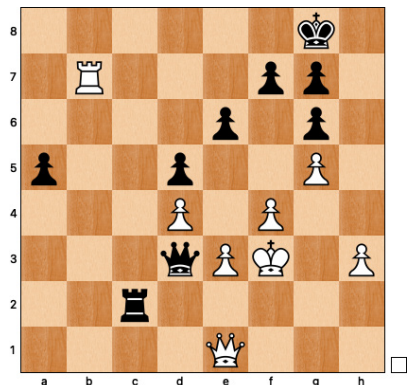


Position after 37. ... Bd6

2. Thomas-Burrus

2021 Spring Server Series

Section S10520

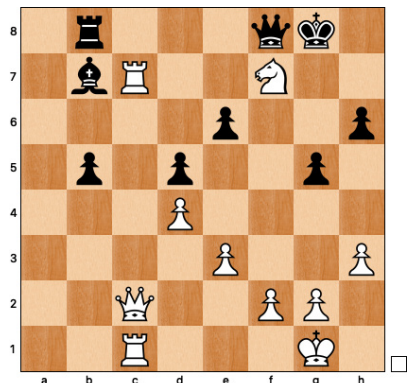


Position after 31. ... Qd3

3. Burrus-Greco

2021 Spring Server Series

Section S10520



Position after 32. ... Qf8

GM Jon Edwards
Continued from front cover

to be a good dad, so I started playing correspondence chess in order to play and stay home at the same time.

MC: *Do you still play OTB chess, or now it is only correspondence?*

JE: The pandemic interrupted my occasional OTB play. I was a regular at the yearly US Amateur Team East. The same team for more than 20 years. Our team will be playing again in February, and they are threatening to name our team "World Champion on Board 2." During the World Final, I would not have played OTB even had there been no pandemic. The Final and the lead up to it was totally consuming – 12-hour days for years.

MC: *With devoting so much time, did you have a system to follow to get the most efficient use of your time?*

JE: Very interesting question! In many middlegames and endgames, I use Chessbase to find similar positions – playing through these to crystallize the main ideas. The process itself is amazingly efficient. In the old days, I used to take informants off the shelf, serially hunting for relevant material. Now electronic searches take just seconds. I maintain a database of all the articles that have ever appeared in the *New in Chess Yearbooks*, so I can find relevant articles instantly. My Informant database is always up to date. The inefficient part these days is hunting through my library for annotations of key games, but I must confess, I enjoy that inefficient part of the process very much.

MC: *How did you learn about correspondence chess and what organizations have you played in?*

JE: In high school, and early on in college, I subscribed to *Chess Review*, and I played in their Golden Knights. I still have the amazing records I kept of each game. After Graduate School, I participated in a chess auction at a tournament in Boston, and two APCT championship sections came up for bid. I won them both and I was off and running. I won the APCT title four times before I finally made the transition to the ICCF.

MC: *You won the 10th United States Correspondence Chess Championship, besides winning the 32nd World Correspondence Chess Championship. Have you had any good results in other top events?*

JE: You bet! I won the 8th North American Invitational with a huge score, but I missed out on norms because there were only 5 non-US players in the event. Still, that got me into my first 3/4 final, where sadly I finished in the middle of the field. My opening choices still reflected my OTB perspectives. When retired from Princeton, I entered a World semi-final section and by finishing second, I qualified for the Candidates. My second-place result there got me into the final. Along the way, I played in the prestigious Spanish masters and came in first, including a neat win over Evgeny Lobanov, then the reigning Russian correspondence champion. And I have played in two Correspondence Chess Olympiad Finals. Our team this year has clinched a medal, which apart from all the pride, seeds us into the next Final Round!

MC: *As the current World Champion, do you get a slot in the next World Championship that comes available, or only a slot in the 3/4 stage?*

JE: I received my invitation to the WF-33 just two days after winning the WF-32, I decided rather quickly to postpone my defense to WF-34, but happily, the US will be well represented by two of my Olympiad team members, Jon Ostriker and Dan Fleetwood.

MC: *In the past, how high did you reach in the qualifying stages of earlier World Championships?*

JE: The WF-32 was my first trip to the Final, and my second attempt in the cycle. The first 3/4 Final came in the aftermath of my North American triumph.

MC: *When you qualified for the 32nd World Championship, what did you do to prepare for this event? Did you have some overall plan of action to follow?*

JE: I played over every game that my opponents had ever played in correspondence and OTB. I charted out where games were likely to go, and I prepared new ideas for all. These were

all great players, with no warts in their opening repertoires. Generally, with Black, I sought to find the quickest and cleanest path to a draw. In that I succeeded, with eight uneventful draws. With White, I sought variations that preserved material within a fixed structure, much like the Ruy but avoiding drawing variations like the Berlin Defense and the Marshall Gambit. I settled on the Vienna Glek (1.e4 e5 2.Nc3 Nf6 3. g3) and took my Russian opponent Osipov through a 119-move odyssey.

MC: *Now that you have reached the top in correspondence chess, what are your future plans?*

JE: I will keep playing correspondence chess. I have 11 games in motion in the strong Kurt Stein Memorial. In two years, my health willing, I will try to defend my World Title, and along the way, I expect to enter the next Candidates tournament, to see if I can keep qualifying for the Final round. One of the nice perks of becoming World Champion are the invitations that I know I will receive. That's just cool!

MC: *You started playing correspondence chess with the postcard, and now the mode is server play. Much has changed. Server play is all the rage, along with chess engines, databases etc. Overall, how do you feel about this? Has it hurt correspondence chess or not?*

JE: I still have all my postcards and, as an active philatelist, I adore how postal rates changed during play. I have a cool collection of stamps used on nearly every postal card type dating back to the 1880's. The servers save on postage and eliminate any possible dishonesty regarding when people receive their moves. As for engines and databases, the result is amazingly clean play and a huge challenge. Wins are much harder to find but bring on much euphoria. My game against Osipov is a nice demonstration of how humans are far better than machines at long term planning within fixed structures. I believe that it's still possible to win precisely because the computers remain miserable planners. In those positions, the databases are the key, reviewing games in similar structures has become very important.

MC: You are a serious book collector and chess author. Earlier days, books played a very useful resource for the correspondence chess player. Do you still think that books are a useful tool?

JE: Absolutely. When I identify important games, it sure is important to turn to the library to find the players' original notes. When I turned to Glek variation of the Vienna, the databases were not enough. The line is both old and new and it was a delight to track down original annotations.

MC: What books do you feel had the most impact on your development into a strong player?

JE: What a cool question! As I mentioned, when I was in fourth grade, I came down with mono. To help pass the time, my dad bought me my first chess book, Reuben Fine's *Great Moments in Modern Chess*, and he came back a week later and found, to his amazement, that I had read the whole thing. I had to stay in bed for 6 months so my dad asked what he could get me to make the time less boring.

"Chess books, please" I answered

So, he kept buying me chess books, and he seemed to have the good sense to buy me game collections. The next book was *1000 Best Short Games of Chess*, and then a book by Reinfeld on the Transition to the Endgame. The key was not so much what books he bought... but the fact that I read them!

Those early books formed a solid foundation. Later Larsen's *Selected Games* was really important, and then Fischer's *My 60 Memorable Games*. I discovered Capablanca's *Games* through Golombek and then everything I could find about Petrosian. In later years... *New in Chess Yearbooks*, *Informants*, and LOTs of biographies. I have read everything by Purdy... that sure helped too! It's hard to be specific because I have a very large chess library, and I'm always reading something.

MC: How large of a chess library do you have?

JE: Well more than 5,000 chess books, but I stopped counting ages ago. My chess stamp collection is also huge, very likely the largest in the world. I am President of COSSU, the Chess-on-Stamp Study Unit and Editor of its quarterly publication, the *Chesstamp Review*. I organized my WF32 vacation time around my need to get each issue to the printer. Your readers are all entitled to a free issue if they request it. Email me at Jedwards.chess@gmail.com

MC: What are your main areas of interest in collecting?

JE: Tournament books, endgames including studies, correspondence literature, biographies, and periodicals. The *Chesstamp* collection is virtually complete, with all issues, covers, autographs, proofs, printing errors etc. My oldest *Chesstamp* items date back to the Civil War. Both collections are more than 50 years in the making.

MC: Who are your favorite chess authors?

JE: Cecil Purdy, Harry Golombek, Bent Larsen, Andy Soltis, Alexey Shirov, Jan Timman.

MC: What are your favorite chess magazines?

JE: *Chess World* was awesome! Today, of course, *New in Chess*, the *American Chess Magazine*, and *Chess Life* is improving. The *Informants* capture my full attention when they arrive, and I really miss the *New in Chess Yearbooks*.

MC: Do you have any correspondence chess books that you think are well written and can recommend?

JE: The most inspiring correspondence chess book for me was Grigory Sanaikov's *World Champion at the Third Attempt*. Talk about great play and perseverance! Apart from that everything by Cecil Purdy and Tim Harding.

MC: A question I like to ask players, what would be the 10 chess books you would want if marooned on a desert Island?

JE: *Python Strategy* - Petrosian, *Fire on Board* - Shirov, *My 60 Memorable Games* - Fischer, *Black is Ok* - Adorjan,

A Knat may Drink - Hinton, *The Games of Petrosian* - Shekhtman, *Grandmaster Preparation* - Polugaevsky, *The Joy of Chess* - Hesse, *Larsen's Selected Games* - Larsen, *Capablanca's 100 Best Games* - Golombek, *Soviet Chess* - Soltis. Oops that's 11.

MC: No its 13! Shirov and Shekhtman have two volumes each.

MC: As a chess author, how many books have you written? Do you write for different magazines too?

JE: 44 books if you include my dalliance with the Kindle. *The Chess Analyst* and *Sacking the Citadel* are my best. I write "Chess Tech," a regular column for the *American Chess Magazine*. I used to write an instructional column for *Chess Life for Kids*.

MC: I have your book: *The Chess Analyst*. It has many of your early postal games. Any plans for a follow up book?

JE: Good idea. No time for that now, but it is on my to-do list.

MC: Who are your chess idols?

JE: Use to be Capablanca. Now its Petrosian. Every aspiring player should review the end of Joppen - Petrosian, Belgrade 1954.

MC: Can you offer some advice to players that can help them improve their play and perhaps get better results in their events?

JE: Petrosian is the key. Play over his games. He effortlessly defeated so many fine players, who had no idea what they did wrong. His main contribution: Thinking not about what move to play, but rather about where all the pieces need to be, in what order, with what exchanges, often within relatively fixed pawn structures. It's marvelous to watch.

MC: There are some areas that perhaps you could offer your thoughts on. 1. Game load, how many games do you feel is a good number to be playing at one time? 2. With server play, moves come at a faster tempo. We see many opponents that like to play "fast food" correspondence chess. Within a short time after you send your move, they reply. Any thoughts on how to handle this issue?

JE: Game load? Keep it low! A maxi-

mum of 20 games at the same time – 12 is better! It is really hard to sustain the right load because there is obvious pressure to play more. The World Final and the Olympiad were going on at the same time, and frankly, that was just too much for me. I wanted to write more but I did not have the time. The pandemic, of course, reduced the stress because there was quite literally nothing else to do! Almost none of my opponents play quickly, and the ones who do run a high risk of making input errors. Two of my opponents played quickly in the Final. One of those games ended quickly, but I never permitted their pace to affect mine. The key game against Osipov was case in point. He did make almost all his moves within a day. I was ready for most of his responses, and more importantly, by the end at least, I was devoting one of my two machines just to that game whether he moved or not. I simply took 5 days a move, on average, and I repeated the position twice to gain time on my clock. Apart from that, one key tip for all correspondence players: Turn off the TV!

MC: *Can you provide us with a game and why it was selected?*

JE: I select Edwards - Osipov, a 119-move marathon, because it showed off most clearly that the decisions in a game with a fixed structure cannot be made by an engine. The planning is way too deep, and the engine evaluations were off-the-mark on most moves. I am still sad I did not find a win there, but I am still looking for it.

ECO: C26
Vienna

Notes by Jon Edwards

White: Edwards, Jon (2529)

Black: Osipov, Sergey Adolfovich (2499)

ICCF World Final

Before play started, I estimated that the winner would need a +2 or +3 score. I selected solid openings with Black to aim for draws in those games. I played two Queen's Indians and two Nimzo Indians against d4, and the Sveshnikov against 1.e4. All eight games ended quickly, peacefully, and without my

having to confront any meaningful new ideas. To have a chance to win the tournament, I would therefore need to win two or three games with white. At first, I prepared to open with 1.d4, but I could not find anything playable against the semi-Slav, a popular defense used by many of my players in this tournament. I spent days reviewing everything I could find there, but Black's defensive resources consistently held up. I instead opened with 1.e4 in every game with white. Two of the games involved the super solid ...h5 line against my Be3 Najdorf Sicilian. You'll achieve considerable chess fame if you find a compelling line there for white. I continue to hunt for it! I faced 1...e5 in the other 6 games. Three were Petrov's. One was a Berlin Ruy. In the other two, to avoid these solid systems, I tried a line in the Vienna Opening, the Glek variation, which has the merit of keeping all the pieces on the board. This is one of those two games.

1.e4 e5 2.Nc3

A move that was very well prepared. I am trying to reach positions akin to the King's Gambit Declined. The Bishop's Opening has one variation that provides Black with full equality and so, here we are in Vienna.

2...Nf6

There are other moves, but they all leave white with a playable advantage.

3.g3

3. Bc4 leads, of course, to the famous Frankenstein-Dracula variation in which Black, outfitted with a strong machine, is fully fine. 3. g3 is the Glek Variation, which has the merit of permitting me to play chess with all my pieces. A number of strong players have tried this line from time to time. There's an old Spassky win that provides the main idea. White will complete the fianchetto, castle kingside, play h3 and tuck the king on h2, and then charge forward with f4-f5. The idea is riskless, well matched to the needs of correspondence play, and frankly, quite appealing.

3...Bc5

The main alternative is ...d5 which I am now testing in the Kurt Stein Memorial. Theory is not well developed and there are plenty of interesting ideas for White in that line thanks in part to that lovely, very active light-squared bishop.

4.Bg2 O-O 5.Nge2

The main attraction of the Vienna is to avoid Nf3 so that f4 can be more quickly played.

5...Nc6 6.O-O a5!?

Unexpected. He wants to preserve the bishop and stake a claim on the queenside, but this may be slightly inaccurate. It's certainly not critical. ...a6, ...d6, and ...Re8 are more commonly played here.

7.h3 Re8 8.d3 Nd4 9.Nxd4

OK, the first exchange. To succeed here, White wants to preserve as much material as possible, but I can stomach one trade.

9...Bxd4



10.Nb5

Creative on my part. Let's get a pawn to c4 to discourage Black's counterplay on the queenside and in the center. Computers are not thrilled with this idea, but in my view, winning in correspondence chess with any consistency requires a stable structure and the ability to maneuver accurately with many pieces on the board.

10...Bb6 11.c4

He can always kick the knight back to c3, where it wants to be anyway, but a c6-pawn creates additional long-term weaknesses in the structure.

11...h6

He is trying hard to limit the scope of what can become a very powerful, dark-squared bishop. Of course, with most of the material left on the board, this push is committal. One of White's main ideas, after all, is to press forward on the kingside with a pawn rush.

12.Nc3

Black's potential counterplay with ...d5 or even b5 is now unlikely. We can buckle our belts. This will be a long struggle, exactly what I wanted.

12...d6 13.Kh2

These moves are part of the usual plan in the Glek and don't need computer confirmation, but it's the World Final so the runs were long. When the engines disagree with the plan, as happens often enough, the humans should step in and reevaluate the plan or proceed. The idea here is straight forward. I want to play f4-f5 and a pawn rush against his castled king. Black has no apparent counterplay.

13...Bd4 14.f4 Bd7

This is supposed to be Black's good bishop, but it has nowhere useful to post. At least without a pawn on c6, the bishop gains some scope on the queenside.

15.Ne2 Bc5

After this tempo loss, I concluded that this game was my best shot for a win in the Final. I wound up devoting thousands of hours to the game, a great many 12-hour days, trying to find the most accurate path forward.

16.Qc2

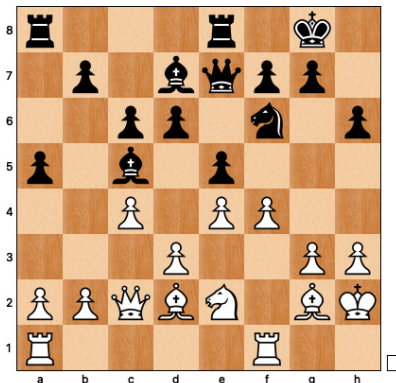
Simple development, aiming to activate the queen's rook.

92

16...c6

He plays it anyway. As a young player, I devoured Larsen's Best Games. He talked about similar positions, albeit with an open d-file, in which Black must worry about the long-term weakness of the d6 pawn. My progress depends in part on making sure that he cannot break with either ...b5 or ...d5. Let's start by turning him into a bystander of the plan.

17.Bd2 Qe7



18.Rac1!?

Activating the queen's rook on the c-file in order to firmly prevent a ... d5 break. But this may be my only error in the entire game. If instead a3 or Rad1, white will retain the dark-squared bishop to aid the kingside attack. I did agonize over the decision, and I was persuaded by the plan that I outline below. But I cannot help but note that the following plans, as impressive as they are, would have been substantially aided by the addition of white's dark-squared bishop after ...Bb4 with Bc1.

18...Bb4

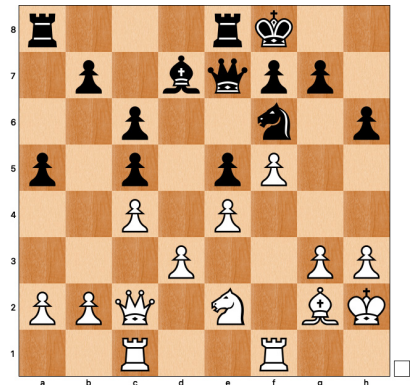
Black succeeds in getting the dark-squared bishops off the board, his second minor piece exchange.

19.Be3 Bc5 20.Bxc5 dxc5 21.f5

I had seen all this coming, and I had the following complex plan in mind. I was sure that I could still win this

even without the dark-squared bishop. Black has no counterplay, and now the kingside can begin its advance.

21...Kf8



His saving grace. White can indeed press forward with the usual pawn-led advance on the kingside, but Black's king won't be there.

22.Ng1

The actual details within this plan are annoyingly niggling. The knight will eventually head towards c3, but first, it needs to reach c2 in order to threaten b4.

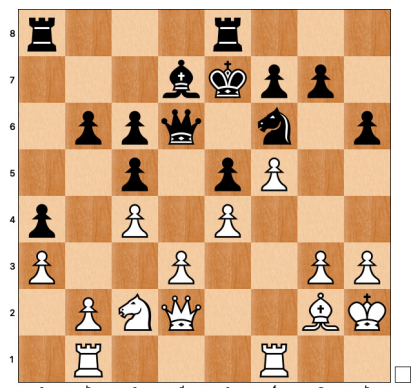
22...Qd6 23.Nf3 Nh7 24.Rcd1 Ng5 25.Ne1 Nh7

Effectively offering a draw by repetition, in which I have no interest.

26.Qd2 Ke7 27.Nc2 b6 28.a3 Nf6 29.Rb1

Initializing the b4-break.

29...a4



Black prevents the pawn break, but

the pawn on a4 is now the target. I began to implement an idea that few over-the-board players and no computers would consider or attempt. Without permitting any counterplay anywhere on the board, I need to reposition my pieces within this structure to force black to defend the a4-pawn with b6-b5. Simply put, to accomplish this task, I will need the white knight on c3, the bishop on c2, and the queen on d1. The obvious constraint: I must carry out this redeployment within 50 moves or face a draw, and I must make sure that when he advances the b-pawn, he cannot trap my Bc2 with b5-b4-b3. Osipov is fully aware of what I am trying to do here and tries throughout the next very long sequence to present small problems that I must confront along the way. If he can delay long enough, he avoids any possibility of a successful white initiative.

30.Ne1 Reb8

Throughout the next long sequence, most of Black's moves threaten nothing. The engines rate the position as 0.30 or thereabouts, and every candidate move, white and black, has the same evaluation.

31.Rf2 Be8 32.Bf1 Nd7 33.Nf3 f6

And the 50-move rule is now in motion. I kept careful track of the number on a white board in my chess study, the war room.

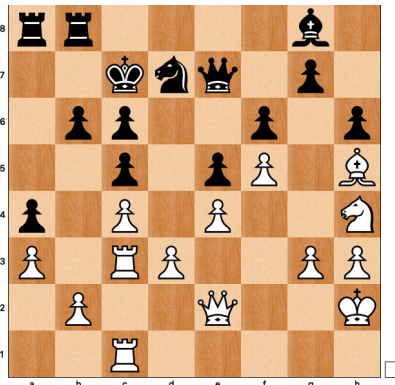
34.Qe1 Kd8 35.Rc2 Kc7 36.Be2 Bf7 37.Qf2 Qe7 38.Qe3 Rh8 39.Rbc1 Kb7 40.Nh4 Nf8 41.Rc3 Kc7 42.Bf3 Nd7 43.Qe2 Rhb8 44.Bh5

A cool step along the way. I invite the trade of my bad, light-squared bishop for his good one.

44...Bg8

**Renew your CCLA
membership online at**

www.serverchess.com



He declines the trade, partly perhaps to keep the 50-move rule clock running, but his "good bishop" is now deprived of any meaningful scope or the ability to transfer to the queenside.

45.R3c2 Nf8 46.Ng2 Nd7 47.Ne3 Kd8 48.Rd2 Kc7 49.Qe1 Qd6 50.Ng2 Rd8 51.Nh4 Nf8 52.Nf3

During all this glacial maneuvering, the first shock of the tournament occurred. One of the players inputted the wrong move, instantly hanging a piece and the game. In all my experiences, such things happen to others. In this case, I was the beneficiary. A free point in the World Final changed everything! I was suddenly halfway to my +2 goal, and a win here would surely lock in the championship. There would be no letup in my approach to this game!

52...Kb7 53.Rdd1 Kc7 54.Rc3

Osipov posted a win against one of the German competitors. Osipov had played well, and the game achieved notoriety, but his opponent had played a dubious line in the Benoni. Sadly, I had been paired with Black against this same person and had already banked my draw, an extremely easy game because my opponent appeared to be unaware that I had played the same defense twice before. All this meant that Osipov and I were both +1, and this game took on even more importance. A win here and my tie-breaks would be awesome, defeating someone who had a win!

54...Kb7 55.Qf2 Kc7 56.Rcc1 Kb7 57.Kg2 Qc7 58.Rc3 Qd6 59.Rb1 Kc7 60.Ng1

The knight finally commences its journey towards c3.

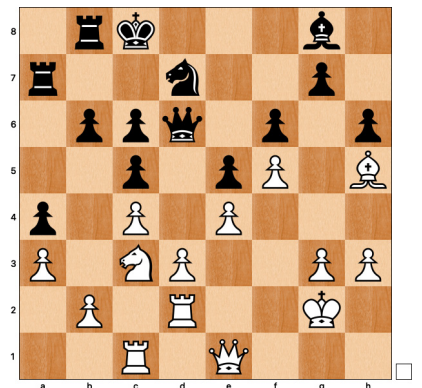
60...Qe7 61.Kh2

I was getting very excited about my chances in this game. I had minimized his play against my d-pawn. He dares not open the kingside. My pieces now have a path to their desired squares in this first phase, and I knew that I could carry out my plan within the constraints of 50-move rule.

61...Nd7 62.Qe3 Qd6 63.Rd1 Ra7 64.Kg2 Raa8 65.Rcc1 Qe7 66.Rd2 Qd6 67.Ne2 Rdb8 68.Qf2 Kb7 69.Nc3

The knight finally reaches c3, beginning the pressure on the a4-pawn.

69...Kc8 70.Qe1 Ra7



71.Bd1

Now the bishop joins the party. We have now made 38 moves without a pawn move or a capture.

71...b5

Finally, the first pawn advance since move 33.

72.Bh5

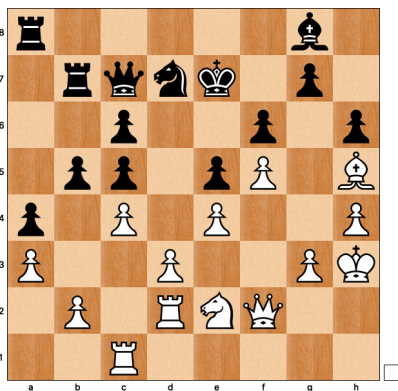
The bishop resumes its most active perch immediately to keep Black's bishop bottled up. The next step in the plan has multiple possibilities, but the main idea involves threatening an exchange on b5 in order to pressure the c-file. I want to force or encourage black to play b5-b4 and then to b3, when White has a winning plan with a king walk to a1 or b1, doubling the rooks on

the g-file, and then pushing the g-pawn forward. The computers still do not see such plans, but humans can do so quite quickly. The computer is useful indeed in confirming that the ideal position is winning for white. I repeatedly used the computer to evaluate different piece placements iteratively within the structure.

72...Kc7

There's a kind of helplessness to Black's moves. He has no meaningful way to make progress and so, he is left to parry every threat and possibility while I progress with my glacially slow plan.

73.Qd1 Kc8 74.Qe1 Kd8 75.h4 Rab7 76.Kh3 Ke7 77.Ne2 Qc7 78.Qf2 Ra8



Amidst my building efforts to impel him to advance the b5-pawn, a very tempting tactic emerged.

79.cxb5 cxb5

If 79...Rxb5? 80.Nc3 ±

80.d4 Qd6

If 80...exd4? 81.Rxd4 ±

81.d5 c4

Black's "good bishop" is now permanently buried, white has a protected passer in the center, and there are all sorts of promising possibilities for the posting of white's pieces. Imagine, for example, maneuvering the knight to b4 and c6, securing the king on the queenside, and blasting open the kingside with support from white's major

pieces. Even white's light-squared bishop will gain a role in that scenario.

82.Rc3 Nc5 83.Qf3 Qd7

A huge think now. He now threatens to break on the kingside with g5 and attempt to seal the structure. I can avoid the pawn advance by retreating my king, but even after ...g5, I can still reorient my pieces for an eventual h4 break. The computer evaluations are simply worthless through here.

84.Nc1

The knight prevents any incursion with Nb3 or Nd3, and steers the knight towards the b4-hole. Another win is posted, this time by LeCroq of France over Schwetich, who had also lost to Osipov. Schwetick has strangely hung a mate in an otherwise even position. Clearly the chess gods were with me because, while LeCroq also now had two wins, both he and Osipov now had tie breakers hurt by the fact that both had defeated the same person! With the outcome of this game still uncertain, I suddenly had the best tie breaker. If all 40 remaining games were to end in a draw, I would now win the tournament outright even without a win in this game. But I never felt comfortable, knowing that anyone's additional win would crunch my chances.

84...g5 85.Na2 Bh7 86.Kh2 Bg8 87.Kg1

There are lines where white's king belongs on the queenside as prelude to the rooks relocating to the h-file. Meanwhile, white's king can cut off black's queen from any entry squares on the kingside.

87...Kd6 88.Bg6 Rbb8 89.Rh2 Qa7

90.Kf1 Nd3 91.Nc1 Nc5 92.Na2

Russia attacked the Ukraine around this time, and the ICCF soon thereafter required all Russians to play under a neutral flag. I forwarded my move with a message of peace. Osipov, a former Cosmonaut, did not respond.

92...Nd3

The repetition will puzzle readers. It's a correspondence game, after all. But I was relatively low on time, and this gains time on the clock. And psychologically, we both now know that I am playing to win and that he is happy to draw.

93.Nc1

Sadly, the lines with Nb4 Nxb4 axb4 offer no winning chances.

93...Nc5 94.Qe3 Nb3 95.Qe1 Qd4 96.Bh5 Rc8 97.Nxb3 axb3 98.Rd2 Qa7 99.Rd1 Bf7 100.Be2

Finally reaching move 100 and avoiding the bishop exchange. There are still plenty of ideas, but they now depend upon an aggressive role on the queenside for white's bishop.

100...Be8 101.g4

Played so very reluctantly. There were so many lines in which white's king or queen could infiltrate via g4 and h5. My hopes are dwindling, relying now on infiltration down the h-file and a well-timed a4.

101...Bd7 102.Kg2 Qc5 103.Rh3 Ra4 104.hxg5 hxg5 105.Rh6 Rf8 106.Qc3 b4

Necessary, but good enough to draw.

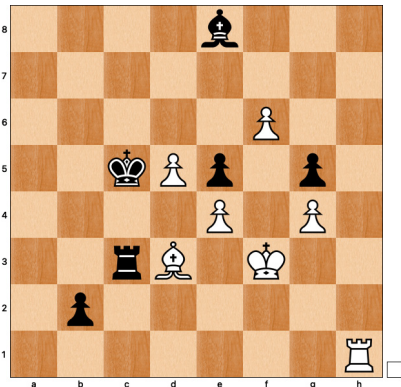
BEST GAMES ENTRIES NEEDED!

Entries to the 2022 Best Games Contest should be sent to Bryce Avery, Avery Enterprises, Inc., 3084 Blue Quail Court, Grand Junction CO 81504. Email: bda@averyenterprises.net. Please submit only games played in CCLA events and include the section number. Games should be completed in 2022. No more than three games per person. Deadline: January 31, 2023.

107.axb4 Qxb4 108.Qxb4+ Rxb4 109. Kf3 Ra4 110.Rc1 Ra2 111.Rxc4 Rxb2 112.Rb4 Rc8 113.Rb6+ Kc5 114.Rhxf6 Rh8 115.Rh6 Rxh6 116.Rxh6

A pawn ahead, which looks great on the board but sadly not on the scoresheet.

116...Rc2 117.Rh1 b2 118.f6 Be8 119.Bd3 Rc3 1/2 - 1/2



Offering a draw. Over-the-board, play would go on. The position remains complex and the lines quite fun. Readers should test their own mettle here. One of the lines even involves two promotions followed by a quick perpetual check. But we faced a clear path to a draw, and by now, there were only two games left in motion. The simplest finish is 120.Ke2 Rc1 121.Rd1 Kd4 122.Bb1+ Kc3 123.Rd3+ Kb4 124. Rd1 1/2-1/2

The tournament did indeed end with 47 consecutive draws, leaving me in first place with the best tie breaker! Surely, I missed a win here somewhere. That will continue to haunt me, the desire for an extra dose of legitimacy, but ultimately it does not matter! Happily, the collusion in mid-tournament did not determine the winner. Finally, after more than two years of 12-hour chess days, I can put my feet up, enjoy the engraved silver platter, and buy a lottery ticket!

MOVING?

CCLA needs six weeks advance notice for changes of address. There will be a \$3.00 charge for each replacement copy of *The Chess Correspondent*.

Chess Books and Magazines for Sale

I am downsizing my library. I have around 500-600 items that I am offering for sale. I have many scarce, hard to find, out of print items, both old and newer items. Most will be offered at very low prices. If interested, please contact and I will send you my list.

Due to high postage costs and customs requirements, I will only be selling to USA customers.

Please contact me (preferred) mcarte64@roadrunner.com

Or: Maurice Carter, 438 McIntire Dr., Fairborn, OH 45324-5525

DVD and Thumb Drive Available for The Chess Correspondent Archive

We have a limited number of DVD and Thumb Drives still available for back issues of *The Chess Correspondent* which is an archive in pdf format for all issues from 1916 through June 2014. When the current inventory is sold out, we have no plans to reprint the Archive. We are now offering the remaining Archive copies at a *member's only special price of \$20 (+ \$2.50 shipping and handling) for the DVD, and \$25.00 (+ \$2.50 shipping and handling) for the Thumb Drive*. If you wish to have one of these items please send a check along with your name and mailing address for \$22.50 for the DVD or \$27.50 for the Thumb Drive to CCLA c/o Doug Hadley, 1789 S Dover Pointe Rd, Henrico, VA 23238-4168. You may also reserve a copy of the DVD or Thumb Drive of *The Chess Correspondent Archive* by sending an email to cclatreasurer22@gmail.com and we will hold your item until your check arrives in the mail.

SAVE TIME!

Renew your CCLA membership online at

www.serverchess.com
and
Click on "renewal page"

Two-Game Matches

Postal or email pairings available upon request with \$3 entry fee for a two-game match - one as White and one as Black. Players must arrange their own opponents. Prisoners may not be paired with each other.

Adventures in Expertland

by Bryce Avery

I was the fifth highest-rated player who entered CCLA's 2021 Fall Server Series. Thus, Jerry, our Tournament Director had a choice: put me in a group with players 50-100 points below me or put me in with the 4 players all rated in the 1950-2150 range, some 150-350 points above me. I am grateful that he put me in the higher group, as my play was better than usual. My 5-3 score was good for second place and raised my rating about 100 points. Here are my three most interesting games from the event.

ECO: B51 SICILIAN ROSSOLIMO

White: Avery

Black: Silverman

2021 Fall Server Series

1. e4 c5 2. Nf3 d6 3. Bb5+

My opponent had beaten me twice in the past, including one game when my three extra pawns were not enough to hold back his swashbuckling attack. Thus, I tried to play solidly, put him on the defensive, and get him away from Najdorf or Dragon lines he might like.

3...Nd7 4. a4 a6 5. Be2 Ngf6 6. Nc3 g6 7. a5 b6 8. axb6 Bb7 9. d3 Nxb6 10. O-O e5 11. Bg5

Black's trio of center pawns make his dark-squared bishop rather bad. I thought first of exchanging it to weaken his king's defense but eventually realized keeping it on the board might work better for me and worse for him.

11...Bg7 12. Qd2 O-O 13. Bxf6! Bxf6 14. Na4 Nd7 15. b4 Be7 16. bxc5 dxc5

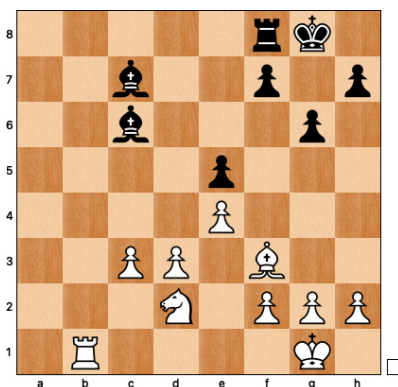
Now Black has two isolated queenside pawns to go with his bad bishop and weak e-pawn. White's position is thus much easier to play, as he can maneuver against those weak pawns,

especially if he refrains from playing d4 so Black can't exchange pawns and open up the game for his two bishops.

17. Rfb1 Rb8 18. Qc3 Qc7 19. Qc4 Bd6 20. c3 Qc6 21. Nd2 Bc7 22. Bg4 Nf6?!

This keeps White from exchanging his passive bishop at d7, but Black's c-pawn is now a defender short.

23. Bf3 Ba8?! 24. Nxc5 Nd7 25. Nxd7 Qxd7 26. Qxa6 Qc6 27. Qxc6 Rxb1+ 28. Rxb1 Bxc6



Black's weak queenside has been vaporized, but White still must figure out the win. Now playing d4 seems to get White's two extra pawns moving, even if Black's bishops become more active.

29. Nc4 f6 30. d4 exd4 31. cxd4 Ba8 32. d5 Be5?!

This prevents d6 for the moment but gives up the two bishops and gives White a protected passed pawn.

33. Nxe5 fxe5 34. Kf1 Kg7 35. Rb6 Rf6 36. Rb8?!

Exchanging rooks here is better; after a rook swap, Black can play ...Bb7/c8, but his bishop still has little to do. Keeping the rooks on the board gives Black unnecessary counterplay.

36...Ra6 37. Ke2 Ra2+ 38. Kd3 Ra3+

38...Rxf2? 39. d6

39. Kc4 Ra1 40. Kc5

40. Kb5?? Rb1+

40...Rc1+ 41. Kd6 Ra1 42. Kxe5 Ra5 43. Ke6 Ra6+ 44. d6 Bc6 45. e5 Ba4 46. Ra8! Bb3+ 47. Ke7 Rb6 48. e6

Else, ...Bf7 makes queening a pawn harder. With White's pawns advanced, his bishop finally comes to life-- which Black does not notice.

48...Rb7+?? 49. Bxb7 1-0

The tournament was won by David Blumberg, who beat everyone else at least once. This was his best game.

ECO: A59 BENKO GAMBIT

White: Avery

Black: Blumberg

2021 Fall Server Series

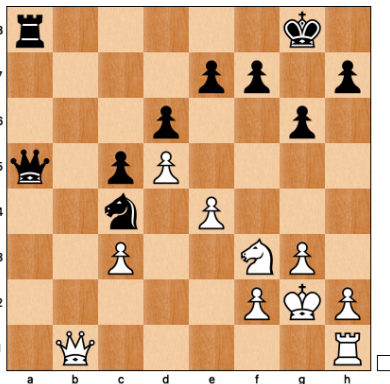
1. d4 Nf6 2. c4 c5 3. d5 b5 4. cxb5 a6 5. bxa6 g6 6. Nc3 Bxa6 7. Nf3 d6 8. e4 Bxf1 9. Kxf1 Bg7 10. g3 O-O 11. Kg2 Nbd7 12. a4 Qb6 13. Qc2 Rfb8 14. Nb5 Ne8 15. Bd2 Nc7 16. Nxc7 Qxc7 17. Rab1 Qa7 18. a5 Qa6

This is a typical Benko position, with Black's major pieces trying to win his pawn back and/or invade White's position. White botches his good position by deciding that the seventh rank and Black's e-pawn look tasty. But he forgot that even when Black's knight moves, it will still guard d7. Now the knight becomes very active.

19. Qa4?! Nb6 20. Qc2 Nc4 21. Bc3 Bxc3 22. bxc3?! Rxb1 23. Qxb1 Qxa5

Not 23. Rxb1? Na3. Black now has his pawn back, and his position is more

comfortable. White captured with his b-pawn so the pawn wouldn't live such a tortured life on a half-open file but moving to the c-file has its drawbacks. White thinks a queen swap will solve his problems, but Black's rook on the seventh rank cannot be easily opposed. White then tries to open the kingside to activate his rook, but even with pawns exchanged, White can't get anything going. Black begins to turn the screws and concentrate on White's c-pawn.



24. Rc1 Qa2 25. Qxa2 Rxa2 26. Kf1 Kg7 27. h4 Kf6 28. Ng5 h6 29. Nf3 Rb2 30. g4 g5 31. hxg5+ hxg5 32. Rd1

32. Kg2? Ne3+

32...Rc2 33. Rd3 Rc1+ 34. Kg2 Nb2 35. Rd2 Na4 36. e5+

This is usually White's goal in Benko/Benoni positions, but Black usually must play ...dxe5. Here, Black doesn't have to play that.

36...Kg6 37. Ra2 Nb6?!

This is Black's one dubious move in the game, and White's best chance to draw. White saw the correct idea but played moves in the wrong order. The correct order is 38. Ra6 Nc4 39. Ra7! Nxe5+ 40. Nxe5 dxe5 41. Rxe7. Black still has an edge after 41...Kf6 42. Rc7 Rxc3 but needs to work for the win. 41...Rxc3 42. Rxe5 is drawn with best play.

38. exd6? exd6

Now, White's d-pawn is stuck, as Black's knight can guard d6 from c4, and White is doomed.

39. Ra6 Nc4 40. Ra2 Rxc3 41. Nd2 Nxd2 42. Rxd2 Rc4! 0-1

After White guards his g-pawn, 43... Rd4 either wins a second pawn for Black or leads to a won pawn ending. A smooth performance by the tournament winner.

Finally, this is my best game from the event, and probably my new "best game ever", as my opponent once played in the finals of the U.S. Correspondence Chess Championship.

ECO: C16 FRENCH WINAWER

White: Avery

Black: Shannon

2021 Fall Server Series

1. d4 e6 2. e4 d5 3. Nc3 Bb4 4. e5 Ne7 5. a3 Bxc3+ 6. bxc3 b6 7. Qg4 Nf5 8. Bd3 h5

Paul mentioned here that he used to play this line over-the-board in the 1970's, when I was a kid. Just what I need: a line he knows well, and I do not.

9. Qh3 g6 10. Nf3 Ba6 11. Bg5 Qd7 12. Bf6!

This bishop keeps both Black rooks out of play for a long time, as Black can't castle to either side.

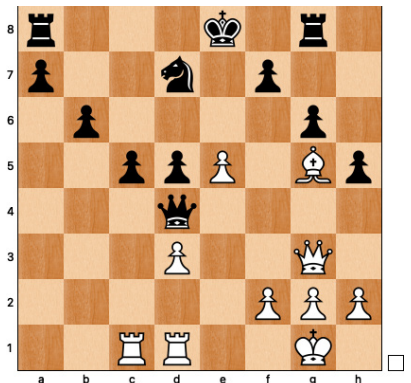
12... Rg8 13. O-O Bxd3 14. cxd3 Qb5 15. Rfd1 Nd7 16. Bg5 c5 17. Rac1 Qa5 18. Nh4 Nxh4 19. Qxh4 Qxa3

The game builds to a crisis; can White open anything for his pieces before Black consolidates his extra material and runs his queenside pawns?

20. c4 Qa4 21. cxd5 exd5

Now what? Not 22. dxc5?! After a long think even by correspondence chess standards, I discovered what my engine said later is the best move, even though it costs a second pawn.

22. Qg3! Qxd4



23. e6! fxe6 24. Qd6 Rg7

Stops the mate threat, but now White has open lines.

25. Qxe6+ Kf8 26. Bh6

Apparently 26. Re1 is even better, but this is pretty good. Black now must guard his knight.

26...Rd8 27. Re1 Qf6

28. Qxd5 is best here, but I wanted to get the queens off and play an ending the Exchange up.

28. Qxf6+ Nxf6 29. Bxg7+ Kxg7 30. Re7+ Kf8 31. Rxa7 d4

In positions like this, White needs to use his rooks for attack until he can get Black's rook exchanged. I missed 32. Re1, which allows immediate doubling on the seventh, because I was too worried about Black's queenside pawns.

32. Rca1 Rd6 33. Kf1 Nd7 34. Re1 Kf7 35. f4 Kf6 36. Kf2 b5 37. Rb7 b4 38. h3 Nb6 39. Kf3 b3?!

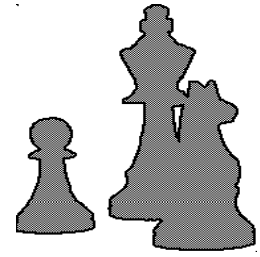
It is hard to find a plan for Black here but separating this pawn from the others does not go well, as it won't be able to queen by itself. White now opens kingside lines.

40. g4! hxg4+ 41. hxg4 g5

Else 42. g5#

42. fxg5+ Kxg5 43. Re5+ Kg6 44. Rxc5 b2 45. Rb5 Nd7 46. Rxb2 Rf6+ 47. Kg3 Nc5 48. R7b6

Readers' Games



ECO: B92

Sicilian Defense

Najdorf / Opocensky 6. Be2 Variation

Notes by Arthur Holmer

White: Anderson II, Dale (1508)

Black: Ishler, Mark P. (1647)

2021 NA Server Class C Championship
Final Section S10017

1. e4 c5 2. Nf3 d6 3. d4 cxd4 4. Nxd4
Nf6 5. Nc3 a6

Wikipedia notes "The Najdorf Variation of the Sicilian Defence is one of the most popular, reputable and deeply studied of all chess openings. *Modern Chess Openings* calls it the "Cadillac" or "Rolls Royce" of chess openings. The opening is named after the Polish-Argentine grandmaster Miguel Najdorf, although he was not the first strong player to play the variation. The Czech chess master Karel Opocensky was the first to play the Najdorf, and in an attempt to have the variation named after him, claimed to have shown it to Miguel Najdorf himself. However, Najdorf was a stronger player and with the help of other strong Argentinian players in the 1950s, deepened the analysis of the opening. He played it as early as 1939. Many players have relied on the Najdorf, notably Bobby Fischer and Garry Kasparov, although Kasparov would often transpose into a Scheveningen".

6. Be2 e5 7. Nb3 Be7 8. O-O O-O 9. Qd3

MCO-15 continues 9. Kh1 b6 10. Be3 Bb7 11. f3 b5 12. a4 b4 13. Nd5 Nxd5 14. exd5 Nd7 15. c3 bxc3 16. bxc3 Bg5 17. Bf2 Qc7 18. c4 Rab8 19. a5 Ba8 20. Ra4 Qb7 21. Nc1 Nc5, equal, and the game was drawn in 32 moves, Nijboer, Friso-

Vachier-Lagrave, Maxime, Wijk aan Zee, NED, 2007.

9. ... Be6 10. Bd2

SECO 3rd edition continues 10. f4 b5 11. a4 Nc6 12. Be3 exf4 13. Bf4 Ne5 14. Qd4 Nc6 15. Qd3 Ne5, equal, from Fressinet, Laurent-Dominguez Perez, Leinier, Calvia, ESP, 2004, analysis by Dominguez.

10. ... Nbd7 11. Nd5 Bxd5 12. exd5 Rc8
13. c4 e4

There are no games with 13. ... e4 in the *Chess Tempo* online database.

Morgunov, Marc-Sahidi, Samir, Ceske Budejovice, CZE, 2022, continued 13. ... g6 14. Na5 Rc7 15. b4 Ne8 16. Bh6 Ng7 17. c5 e4 18. Qd2 Ne5 19. Rac1 dxc5 20. Bf4 f6 21. bxc5 Bxc5 22. Bxe5 fxe5 23. Rxc5 Rxc5 24. Nxb7 Qb6 25. Nxc5 Qxc5 26. Bg4 Ne8 27. Be6+ Kg7 28. Qg5 Qd6 29. Rb1 Nc7 30. Rb7 Re8 31. h4 h6 32. Qe3 a5 33. Qa7 Re7 34. Qb8 h5 35. Qg8+ Kh6 36. Qf8+ Kh7 37. Bg8+ Kh8 38. Bf7+ 1-0

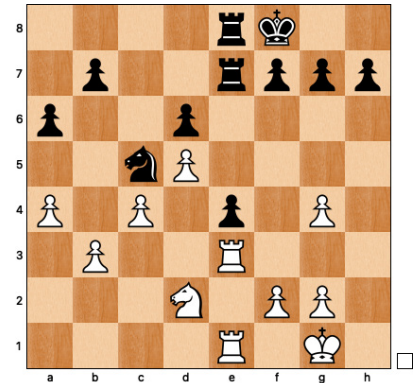
14. Qg3 Ne5 15. Bh6 Ng6 16. Be3 Re8
17. a4 Ne5 18. Nd2 Qd7 19. h3 Qf5 20.
b3 Nfd7 21. Bg4

The start of an exchange plan that will lead to doubled pawns for White.

21. ... Nxg4 22. Qxg4 Qxg4 23. hxg4

White now has doubled pawns on g2 and g4. These pawns will remain doubled for the rest of the game.

23. ... Bf6 24. Rac1 Bb2 25. Rc2 Ba3 26.
Bd4 Bc5 27. Bxc5 Nxc5 28. Re1 Rc7 29.
Rc3 Kf8 30. Rce3 Rce7



We now have two opposing rook batteries on the e-file. Black's e4 pawn is in the crossfire. At present, Black's c5 knight is supporting the pawn and preventing its exchange. Black cannot play f5 because of the White pawn on g4.

31. f3

This move was intended to set up the exchange of the rooks and undouble the pawns on g4 and g4. Unfortunately, it ends up making matters worse. Stockfish recommends 31. a5 to set up undermining the Black knight on c5 with a timely b4.

31. ... exf3 32. Rxe7 f2+

An excellent example of a *Zwischenzug* (German, an unexpected in between move).

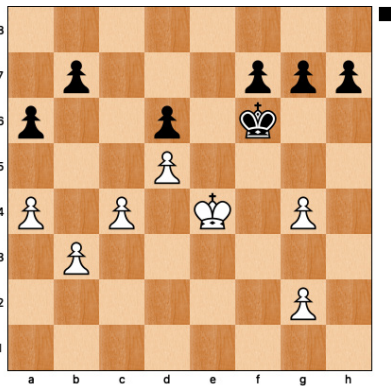
33. Kxf2

The doubled pawns are now also isolated, usually a significant endgame weakness.

33. ... Rxe7 34. Rxe7 Kxe7

We have reached a knight and six pawns endgame. The knights won't stay on the board very long.

35. Ke3 Kf6 36. Ne4+ Nxe4 37. Kxe4



The players have reached a king and six pawns ending that has a very interesting and instructive pawn structure. Details of the pawn structure are as follows: White has a 4:3 majority on the queenside, Black has a 3:2 majority on the kingside. Also, White has two isolated doubled pawns on g2 and g4 and Black has one isolated pawn on d6. The general plans for both players in this position are to exchange pawns in their respective majorities to create a passed pawn. A specific plan for White would be to play a5 to lock the queen side and set up a b4-b5 advance. A specific plan for Black is to prevent White's a-pawn advance by playing a5 and then play to exchange one of White's doubled g pawns to create a 2:1 majority and after that play to create passer. Note that it is Black's move. Let's see what moves the players make.

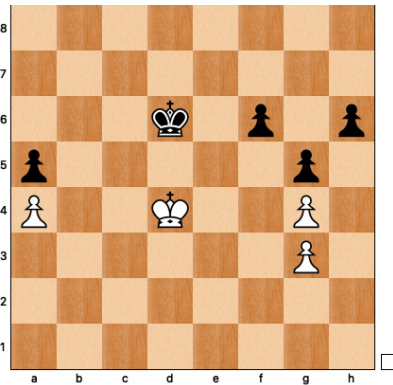
37. ... a5 38. Kd4 b6 39. Kc3 Ke5 40. b4 g5 41. bxa5 bxa5 42. Kd3 h6 43. g3 f6 44. Kc3 Ke4 45. c5 Kxd5 46. cxd6 Kxd6 47. Kc4

An unfortunate move that allows Black to take the direct opposition. Stockfish recommends 47. Kd4, taking the opposition,=.

47. ... Kc6 48. Kd4 Kd6 0-1.

MOVING?

CCLA needs six weeks advance notice for changes of address. There will be a \$3.00 charge for each replacement copy of *The Chess Correspondent*.



White is in zugzwang. Moving to c4 or e4 allows the Black king to invade. Here is a sample line from Stockfish:

49. Ke4 Kc5 50. Ke3 Kb4 51. Kd4 Kxa4 52. Kc4 Ka3 53. Kc3 a4 54. Kc2 Kb4 55. Kb2 Kc4 56. Ka3 Kd3 57. Kxa4 Ke4 58. Kb3 Kf3 59. Kc4 Kxg4 60. Kd3 Kxg3 61. Ke2 Kg2 62. Ke1 h5 63. Kd2 h4 64. Kc3 h3 65. Kb4 Kg3 66. Kc5 h2 67. Kd5 Kf3 68. Ke6 g4 69. Kxf6 Kf4 70. Ke6 h1=Q 71. Ke7 g3 72. Kd6 g2 0-1

A very balanced and well-played game that reached a complex king and six pawn ending. Once again, an excellent example of how one move can upset the delicate balance of this type of ending.

ECO: C68

Ruy Lopez

Exchange Variation

Normal Variation

Notes by Arthur Holmer

White: Askvig, Brent (1644)

Black: Mann, Wallace (1714)

Event: 2021 NA Server Class B
Championship Rd 1, Section S10010

1. e4 e5 2. Nf3 Nc6 3. Bb5 a6 4. Bxc6 dxc6

Wikipedia notes: "Black may recapture on c6 with either pawn; although 4...bxc6 is playable, 4...dxc6 is almost always chosen at master level. Black has gained the bishop pair at the cost of a weakened pawn structure, having doubled pawns on c6 and c7. White aims to reach an endgame with a superior pawn structure, which may become an important factor. Thus, Black is compelled to strive for an active position, generally avoiding

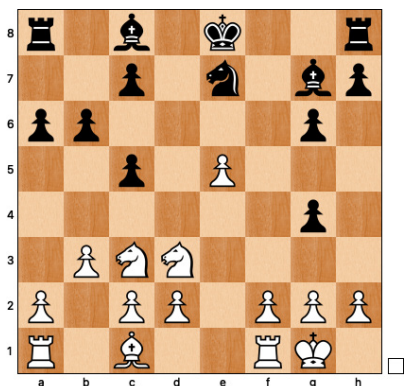
piece exchanges. The variation was introduced into grandmaster play by Emanuel Lasker, and later invigorated with new ideas by Bobby Fischer".

5. O-O Ne7

MCO-15 continues 5. ... f6 6.d4 Bg4 7.dxe5 Qxd1 8.Rxd1 fxe5 9.Rd3 Bd6 10.Nbd2 Nf6 11.b3 O-O-O 12.Bb2 Rhe8 =, and the game was drawn in 39 moves, Kaidanov, Gregory S-Sokolov, Ivan, Groningen, NED, 1993.

SECO 3rd edition continues 5. ... Qf6 6.d4 exd4 7.Bg5 Qd6 8.Nxd4 Be7 9.Bxe7 Nxe7 10.Nc3 Bd7 11.Nb3 Qxd1 12.Raxd1 b6, =, and the game was drawn in 30 moves, Leko, Peter-Carlsen, Magnus, Moscow, RUS, 2007.

6. Nxe5 Qd4 7. Qh5 g6 8. Qg5 Bg7 9. Nd3 f5 10. e5 c5 11. b3 b6 12. Nc3 Qg4 13. Qxg4 fxg4



Barely out of the opening, this position has several positional problems for Black. Black will have to deal with two sets of doubled pawns and a king in the center. Black also has a sight material deficit of one pawn. It is very interesting and instructive to follow these drawbacks throughout the game and see how they are corrected.

14. Bb2 Bb7 15. Rfe1 O-O-O 16. Re2

There are no games with 16. Re2 in the *Chess Tempo* online database.

Fressinet, Laurent-Bacrot, Etienne, Besancon, FRA, 1999, continued 16.Ne4 Rhf8 17.Rad1 Nf5 18.e6 Bxb2 19.Nxb2 Rde8 20.Ng3 Nd4 21.c3 Nxe6 22.Nd3 h5 23.Re3 Ng7 24.Rde1 Rd8 25.R1e2 h4 26.Ne5 hxg3 27.Rxg3 Nh5 28.Rxg4 Nf4 29.Re1 Rxd2 30.f3 Rd6 31.h4 0-1

16. ... Nf5 17. Rc1 Bh6 18. Ne4 Bg7 19. Nf6 Nd4 20. Bxd4 Rxd4

Playing 20. ... cxd4 undoubles one set but loses the g4 pawn to 21. Nxc4.

21. Rce1 h5 22. Nc1 Bh6 23. d3 Rf4 24. Ne4 h4



Black's plan is to tear open White's king position. Amazingly enough, even though Black has everything but the kitchen sink aimed at White's king, the attack will not be successful. It is very instructive to watch the attack stall.

25. Nf6 g3 26. f3 gxh2+ 27. Kxh2 Rf5 28. Ne4 Rxe5 29. d4 cxd4

Now the undoubling exchange works.

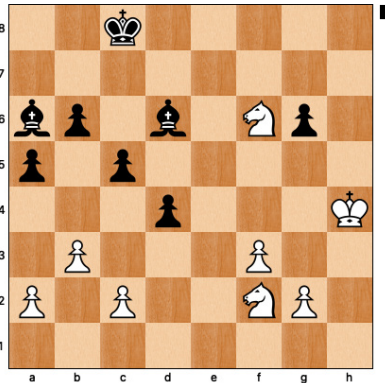
30. Nd3 Re6 31. Ndf2 c5

This move secures the d4 pawn. Now Black's 4:3 queenside pawn advantage gives Black another attacking possibility.

32. Ng4 Bf4+ 33. Kh3 a5 34. Nef6 Rxe2 35. Rxe2

The players decide to remove the rooks from the board. The second pair will come off in a few moves.

35. ... Rd8 36. Nf2 Ba6 37. Re6 Rd6 38. Rxd6 Bxd6 39. Kxh4



We have reached a king, two knights and five pawns vs a king, two bishops and five pawns ending. Black's plan is to support the advance of the c- and d-pawns with the two bishops. White's plan should be to hinder the pawn advances with the knights and mobilize the advance of the kingside pawn majority to generate counter play.

39. ... Bf1 40. g3 c4

If 40. ... bxc4, then 41. Bxc4 and the a2 pawn falls as the two bishops control all of the squares.

41. f4

An unfortunate move that allows Black to set up the coming d3 push.

41. ... c3 42. N6e4 Bb4 43. Kg5 d3 0-1

A very interesting game where Black overcomes several positional problems and attacks the White king position. When this attack stalls, Black then uses the two bishops to support a push to pass the d-pawn in the center. An excellent demonstration of using the "two weaknesses" strategy.

ECO: D35
Queens Gambit Declined
Exchange Variation

Notes by Arthur Holmer

White: Hodgkins, Neil C. (1383)
Black: Sandora, John (1368)
2021 N.A. Server Class D Championship
Section S10014

1. d4 d5 2. c4 e6 3. Nf3 Nf6 4. Nc3 c6

The position looks like a Semi-Slav, but as Wikipedia notes "The Semi-Slav Defense is a variation of the Queen's Gambit chess opening defined by the position reached after the moves: 1. d4 d5 2. c4 c6 3. Nf3 Nf6 4. Nc3 e6. The position may readily be reached by several different move orders. Black's supporting pawns resemble a mixture of the Orthodox Queen's Gambit Declined, e6, and the Slav Defense, c6. Black is threatening to capture the white pawn on c4 and hold it with ...b7-b5. White can avoid this in several ways. About 80% of games continue 5.Bg5 or 5.e3. Other possible moves are 5.Qb3, 5.g3 and 5.cxd5, the last of which, after 5...exd5, leads to a line of the QGD Exchange Variation where White's early Nf3 enables Black's queen bishop to freely develop, which should give equality. It is worth noting that 5.Bf4 is considered somewhat inaccurate, as 5...dxc4 is favorable for Black".

5. cxd5 exd5 6. Bg5

SECO 3rd edition continues 6. Bf4 Bf5 7. e3 Bd6 8. Bxd6 Qxd6 9. Bd3 Bxd3 10. Qxd3 Nbd7 11. O-O O-O 12. Rab1 a5 13. Qc2 Rfe8 14. Rfc1 Ra6 15. h3 h6, equal, Riazantsev, Alexander-Galkin, Alexander, St Petersburg, RUS, 1999, (in a slightly different move order).

6. ... Be7 7. e3 Ne4

MCO-15 continues 7. ... Nbd7 8. Bd3 Nh5 9. Bxe7 Qxe7 10. O-O Nhf6 11. Qc2 O-O 12. Rfe1 g6 13. a3 Nb6 14. b4, White stands slightly better, Piket, Jeroen-Timman, Jan H, Wijk aan Zee, NLD, 1996, (in a slightly different move order).

BEST GAMES ENTRIES NEEDED!

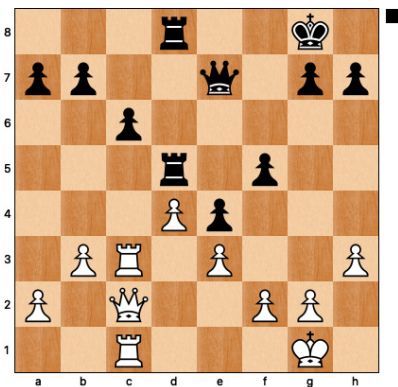
Entries to the 2022 Best Games Contest should be sent to Bryce Avery, Avery Enterprises, Inc., 3084 Blue Quail Court, Grand Junction CO 81504. Email: bda@averyenterprises.net. Please submit only games played in CCLA events and include the section number. Games should be completed in 2022. No more than three games per person. Deadline: January 31, 2023.

8. Bxe7 Qxe7 9. Be2

There are no Chess Tempo online database games with 9. Be2.

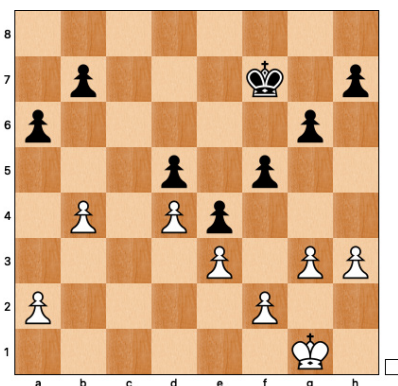
Brynell, Stellan-Hammer, Jon Ludvig, Antalya, TUR, 2017 continued 9.Nxe4 dxe4 10.Nd2 O-O 11.Qc2 Re8 12.Bc4 Nd7 13.O-O Nb6 14.Bb3 Nd5 15.Bxd5 cxd5 16.Rfc1 h5 17.Qc7 Qf6 18.Qf4 Qxf4 19.exf4 e3 20.fxe3 Rxe3 21.Re1 Rxe1+ 22.Rxe1 Bd7 23.Nf1 Rc8 24.Ne3 Rc6, and Black won in 55 moves.

9. ... O-O 10. O-O Nd7 11. Rc1 Nxc3 12. Rxc3 Nf6 13. Nd2 Be6 14. h3 Ne4 15. Nxe4 dxe4 16. b3 Bd5 17. Bc4 Rfd8 18. Bxd5 Rxd5 19. Re1 f5 20. Qc2 Rad8 21. Rc1



White completes a powerful two rook and queen battery. This is a very strong tactical weapon. In this position, the battery power is somewhat diminished in that it is aimed at Black's protected c6 pawn. Stockfish recommends 21. a4 first to set up b4-b5 and then complete the battery.

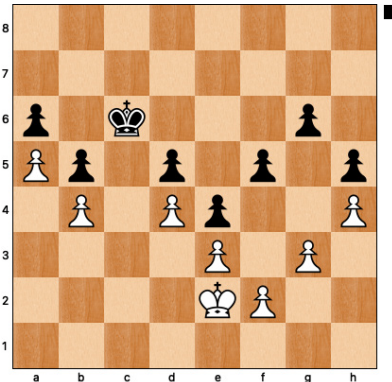
21. ... a6 22. Rc5 Rxc5 23. Qxc5 Qxc5 24. Rxc5 g6 25. g3 Kf7 26. b4 Rd5 27. Rxd5 cxd5



An amazing transformation of the position. In six moves from the battery,

it is now a king and seven pawns vs king and seven pawns endgame. The c-file is open, but there are no pieces to take advantage of it.

28. h4 h5 29. Kg2 Ke6 30. Kf1 Kd6 31. Ke2 Kc6 32. a4 b5 33. a5



White has locked the queenside and should prepare to lock the kingside for a well-balanced draw.

33. ... Kd6 34. f3

Perhaps expecting 34. ... exf3+ and after 35. Kxf3 then Kf4.

34. ... Ke6

Black centralizes the king and waits.

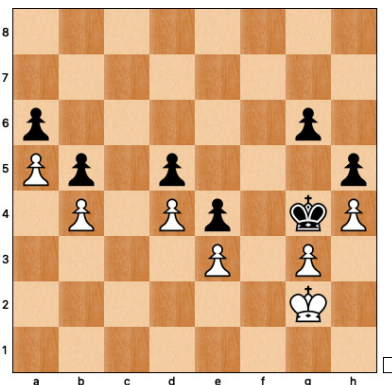
35. fxe4

A most unfortunate move. Now Black recaptures with advantage. 35. f4 would have secured the draw.

35. ... fxe4

This recapture opens the f5 square for the Black king and sets up an invasion via f5-g4.

36. Kf2 Kf5 37. Kg2 Kg4



White is in zugzwang. Moving the king to h2 or f2 allows the Black king to enter and capture material.

38. Kh2 Kf3 39. Kh3 Kxe3 40. Kg2 Kd2 41. g4 e3 0-1

The Black e-pawn will queen effortlessly.

A very well-balanced game that graphically illustrates how each move in a king and pawn endgame must be carefully analyzed and planned.

ECO: B22
 Sicilian Defense
 Smith-Morra Gambit Declined
 (2.c3 Alapin)

Notes by Arthur Holmer

White: Catania, Duane (1630)

Black: Zarges, Ron V. (1793)

2021 Spring Server Series Section S10519

1. e4 c5 2. d4 cxd4 3. c3 Nf6

The Smith-Morra Gambit Accepted continues 3. ... dxc3.

4. e5 Nd5 5. cxd4

Here the Smith-Morra Gambit Declined transposes into the Alapin Variation of the c3 Sicilian. Wikipedia notes " ... the Sicilian Defense, Alapin Variation is a response to the Sicilian Defense characterized by the moves: 1. e4 c5 2. c3. It is named after the Russian master Semyon Alapin (1856–1923). For many years, it was not held in high regard, since 2...d5 was thought to allow Black easy equality. Today, the Alapin is considered to be one of the most solid and respectable Anti-Sicilians, and it is championed by many modern grandmasters".

MCO-15 continues: 5. Nf3 Nc6 6.Bc4 Nb6 7.Bb3 d5 8.exd6 Qxd6 9.O-O Be6 10.Na3 dxc3 11.Qe2 Bxb3 12.Nb5 Qb8 13.axb3 e5 14.Nbd4 f6 15.bxc3 Be7 16.Nf5 O-O 17.N3h4 Rf7, equal, Howell, David W L-Wells, Peter K, Birmingham, ENG, 2005.

5. ... d6 6. Nf3

SECO 3rd edition continues: 6.Bc4 Nb6 7.Bb5+ Bd7 8.e6 Bxb5 9.Qh5 Qc8 10.Qxb5+ Kd8 11.Be3 fxe6 12.Ne2 Qc4 13.Qg5 Qd5 14.Qg3 Nc6 15.O-O Qf5, 1/2-1/2, Antonio, Rogelio Jr-Wang, Zili, Kuala Lumpur, Malaysia, 1990.

6. ... e6 7. Bc4 Nc6 8. Nc3 Nxc3 9. bxc3 dxe5 10. dxe5 Qa5 11. Qb3

There are no games with 11. Qb3 in the *Chess Tempo* online database.

Ribli, Zoltan-Sahovic, Dragutin, Wijk aan Zee, NED, 1972, continued: 11.O-O Qxc3 12.Qe2 Qa5 13.Bf4 Be7 14.Rfd1 O-O 15.h4 Rd8 16.h5 Bd7 17.Rab1 Qc7 18.h6 g6 19.Qe3 Be8 20.Rdc1 Rd7 21.Bg5 Bf8 22.Bf6 Rc8 23.Nh4 Be7 24.Bxe7 Rxe7 25.Nf3 Rd7 26.Qf4 Qd8 27.Bb3 Qe7 28.Ng5 Kh8, and White won in 39 moves.

11. ... Nxe5 12. Nxe5 Qxe5+ 13. Be3 Bd7 14. O-O Bd6 15. g3 Bc6 16. Bf4 Qc5 17. Bxe6 O-O 18. Bxd6 Qxd6 19. Bh3 Qc5 20. Qb4 Qd5 21. f3 Rfe8 22. Rad1 Qxa2

Black wins an important pawn that sets up a potential outside passer on the a-file.

23. Rf2 Qa4 24. Qxa4 Bxa4 25. Rd4 Bc6 26. Bd7 Bxd7 27. Rxd7

The players have reached a two rook and pawns vs two rook and pawns middle game. White should keep the possibility of two rooks on the seventh in mind.

27. ... b5 28. Ra2 a6 29. Kf2 Kf8 30. Rd6 Re6 31. Rxe6 fxe6

We now have a rook and pawns vs rook and pawns ending that has a very unsymmetrical pawn structure. Black's a6 and b5 pawns are threatening to advance and create a passer.

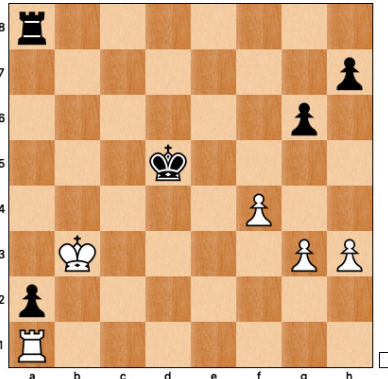
32. Ke3 Ke7 33. Ke4 a5 34. f4 Kd6 35. Kd4 g6 36. h3 a4 37. c4 bxc4 38. Kxc4

Black now has an outside passer on the a-file. This pawn will be a constant distraction for White from now on.

38. ... e5 39. Rd2+ Ke6 40. Re2 a3 41. Rxe5+

White levels the material, but Black's passer will still need constant attention.

41. ... Kf6 42. Re1 a2 43. Ra1 Ke6 44. Kb3 Kd5

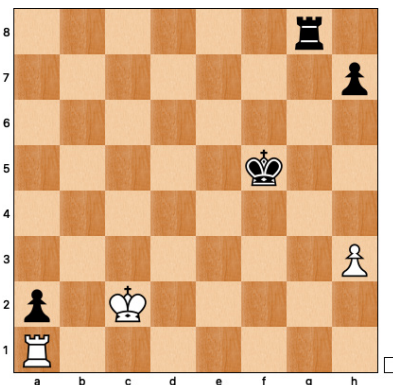


A very interesting position. Black is threatening to invade the king side as well as queen a pawn on the queen side. White must find a way to counter both threats.

45. g4 Ke4 46. f5 gxf5 47. gxf5 Kxf5

Material is uneven again. White must still find a way to protect the h3 pawn and to capture Black's a2 pawn.

48. Kb2 Rb8+ 49. Kc2 Rg8

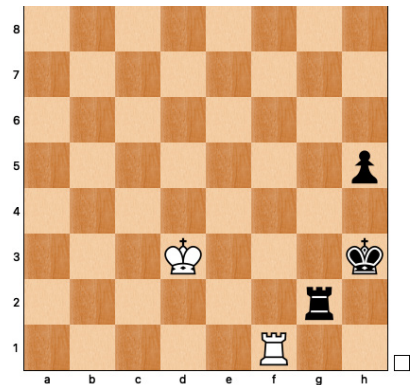


Another tricky position. White cannot stray too far from the a-pawn, but timing is crucial to leave time to get to the king side.

50. Rf1+ Kg6 51. Kb2 Kh5 52. Kxa2

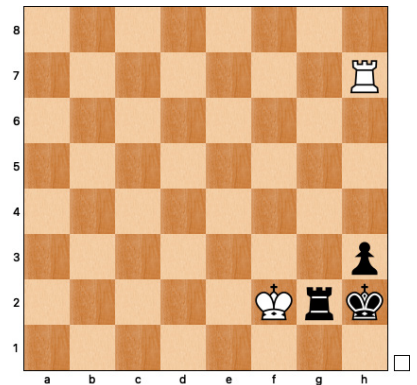
The White king finally captures the passer but appears to be hopelessly out of play. Stay tuned.

52. ... Kh4 53. Kb2 h5 54. Kc2 Rg2+ 55. Kd3 Kxh3



Black removes the last White obstacle to advancing the h5 pawn. Note that Black's own king is now in the way.

56. Ke3 h4 57. Rf6 Rg4 58. Kf3 Rg3+ 59. Kf2 Kh2 60. Rh6 h3 61. Rh7 Rg2+ 1/2-1/2.



An amazing final position for the game. The Black king cannot get out of the box. A well-played game and a good example of a "fighting draw". The game went through several transitions where crucial decisions had to be made at each point and each of those points could have been a disaster for either player. Congratulations to the players for fighting it out to the end.

SAVE TIME!

Renew your CCLA membership online at

www.serverchess.com

and

Click on "renewal page"

ECO: C70

Ruy Lopez

Neo Arkangelsk 5. ... Nf6 Variation

Notes by Arthur Holmer

White: Thomas, Gerald K. (1585)

Black: Smiley, William R. (1484)

CCLA 2021 Summer Server Series

Sect 3, S10520

1. e4 e5 2. Nf3 Nc6 3. Bb5 a6 4. Ba4 b5
5. Bb3 Nf6

The Arkangelsk variation (C78) continues with Black playing lines with Bb7 or Bc5.

MCO-16 continues 5. ... Na5 6.O-O d6 7.d4 Nxb3 8.axb3 f6 9.Nh4 Ne7 10.f4 Bb7 11.d5 c6 12.c4 exf4 13.Rxf4 g5 14.Qh5+ Kd7 15.Rxf6, White has the upper hand, Arnason, Jon L-Agdestein, Simen, Gausdal, NOR, 1987.

SECO 3rd edition continues 5. ... Na5 6.O-O d6 7.d4 Nxb3 8.axb3 f6 9.Nc3 Bb7 10.Nh4 Qd7 11.Nd5 Ne7 12.Qh5+ Kd8 13.c4, White stands slightly better, Bled, SLO, 2002.

6. d3 h6 7. O-O Bc5 8. c3 d6 9. h3 O-O
10. Re1 Bb7 11. Be3

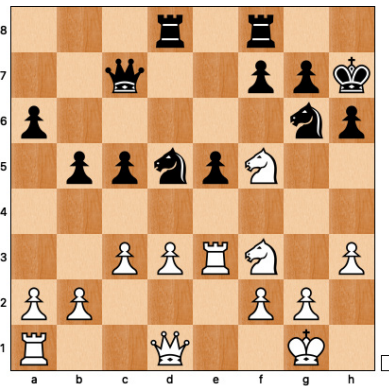
There are no *Chess Tempo* online database games with 11. Be3.

Chirila, Ioan-Cristian-Onischuk, Alexander, Richardson, USA, 2011, continues 11.Nbd2 Bb6 12.Nf1 Na5 13.Bc2 c5 14.Ng3 Nc6 15.Nh2 Ne7 16.Qf3 Nh7 17.Qh5 Nf6 18.Qf3 Nh7 19.Qh5 Nf6 20.Qe2 Nh7 21.Ng4 Kh8 22.a4 Qd7 23.Be3 Rac8 24.b4 Qc7 25.axb5 axb5 26.Bb3 cxb4 27.cxb4 Bxe3 28.Qxe3 Qd7 29.d4 exd4 30.Qxd4 f6 31.Nh5 Qc6 32.Nf4 Ng5 33.Bd5 Qd7 34.Bxb7 Rc4 35.Qe3 Rxb4 36.Ra7 Ra4 37.Ba6 1-0.

11. ... Bxe3 12. Rxe3 Ne7 13. Nbd2 Ng6
14. Nf1 c5 15. N3d2 Qc7 16. Ng3 Kh7
17. Nf3 Rad8 18. Nf5 d5

Black plays a pawn advance that looks very routine. However, it will lead to a series of exchanges that create a significant positional defect for White. At this point in the game, it is not easy to see the eventual consequences of this move.

19. exd5 Bxd5 20. Bxd5 Nxd5



The positional defect is now clearly visible. The White d3 pawn is weak as it cannot advance due to Black's c5 and e5 pawns. Also, it is on a half open file where Black already has a rook placed at d8 that adds pressure to the pawn.

21. Re4 f6

Black reinforces the e5 pawn.

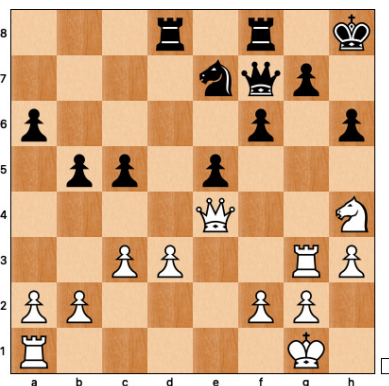
22. N3h4

White starts a plan to attack on the kingside.

22. ... Nde7

Black adds to the defense of the g6 knight and clears the d-file at the same time. The d3 pawn has now become a target.

23. Qg4 Qc8 24. Re3 Qe6 25. Rg3 Qf7
26. Nxe7 Nxe7 27. Qe4+ Kh8



White's kingside attack is taking shape and the position appears to be full of energy. However, Stockfish evaluates this position as equal, not giving any tactics.

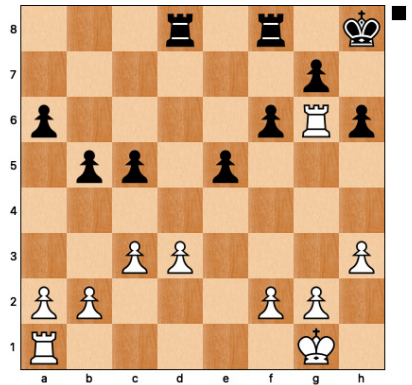
28. Ng6+

White starts the attack.

28. ...Nxg6 29. Qxg6

An unfortunate move that will draw White's rook on g3 away from the defense of the d3 pawn (yes, it's still there). 29. Rxc6 avoids the queen exchange and guards the d3 pawn.

29. ... Qxg6 30. Rxc6



Black now has a winning position. It may appear sudden, but we have discussed the open d-file and the weak d3 pawn earlier.

30. ... Rxd3

Black wins the d3 pawn and takes control of the d-file at the same time. Note how White's g6 rook is unable to do anything about Black's upcoming invasion.

31. Kf1 Rfd8

Black doubles the rooks on the d-file. Black's plan should be to occupy the seventh rank.

32. Ke1 Rd2

The first rook reaches the seventh rank.

33. b3 Rc2 34. Rg3

White defends the c3 pawn and tries to get the rook back in play.

Continued on page 107

TD REPORTS

By Jerry Honn
1154 Dayton Drive
Galesburg, IL 61401-1313

Game results, time complaints, and adjudication requests may be sent to this address, or emailed to: jerryhonn@yahoo.com

Prize credits are automatically posted to winners' accounts. You may request a check (except for Gustafson credits) or deduct from your next payment to CCLA or leave in your account.

2020 Postal Social Championship Round One Prizes

Everett Luoma (M00021) 5.0 – 1.0
Jay Simonson (tie)
Mark Huston (M00031) 6.0 – 0.0

2021 Postal Social Championship Round One Prize

William Smiley (M10031) 5.0 – 1.0

2020 Postal Grand National Round One Prize

Chris Brunt (G00011) 5.0 – 1.0

2019 Postal North American Class Championships (final standings)

James McLaughlin M/EX 6.0 – 0.0
Chris Brunt (tie) A 8.0 – 2.0
Ross Holmes (tie)
James Modesitt B 5.0 – 5.0
Jay Simonson C 6.0 – 0.0

2020 Postal North American Class Championships (final standings)

Brian Hey M/EX 7.5 – 0.5
Lev Lamech A 5.5 – 2.5
Alex Cacas B 4.0 – 4.0

MOVING?

CCLA needs six weeks advance notice for changes of address. There will be a \$3.00 charge for each replacement copy of *The Chess Correspondent*.

2021 Postal Team Championship XXII Progress Report

Team	Captain	
Midal Mulligan		
Charles Nace		6.0 – 4.0 (14)
Tobacco Co. Norsemen		
Bill Smiley		5.0 – 6.0 (13)
Knight Riders		
Michael Flynn		4.0 – 5.0 (15)

2019 Server North American Class Championships

Philip Haase	A	4.0 – 0.0
Patrick Walsh	B	3.5 – 0.5
Ed McLaughlin	C	2.0 – 0.0
Brian Acebo	D	2.0 – 0.0

2020 Server North American Class Championships

Brian Hey	A	4.5 – 1.5
Tom Laaman (tie)	B	5.0 – 1.0
Bryce Avery (tie)		
Tom Greco	C	4.0 – 0.0
Jarrod Harris	D	3.0 – 1.0

2021 Server North American Class Championships

<i>in progress</i>	A	
Jason Smith	B	2.5 – 1.5
Mark Ishler	C	2.0 – 0.0
John Sandora	D	5.0 – 1.0

2022 Server North American Class Championships

John Sandora	D	1.5 – 0.5
--------------	---	-----------

2021 Server Team Championship (final standings)

Team	Captain	
Castles West	Paul Shannon	22.5 – 13.5
Pawntastics	Rich Strelecky	20.0 – 16.0
Norsemen	Arthur Fisher	18.0 – 18.0
Wodpushers	Glenn Tripp	11.5 – 24.5

WELCOME NEW MEMBERS!

John Becker	1780
The Villages, FL	
Daniel Behuniak	1100
Williamsville, NY	
John Chirillo	2036
Plainfield, IL	
Ethan Civan	1703 *
Bala Cynwyd, PA	
Renato Dominguez	1100
Miami, FL	
Jeff French	1553
Lakeside, TX	
Adam Graupe	1323
Superior, WI	
Peter Lupsha	1400
Tome, NM	
Mahlon Miller	1200
Story City, IA	
Brian L. Morris	(un)
The Villages, FL	
Douglas Ray	1841 *
Wichita Falls, TX	
Daniel Santucci	1500
St Petersburg, FL	
Phillip Schick	1700
Columbus, OH	

returning member*

WELCOME NEW GUSTAFSON PLAYERS!

Thomas Amburn	1930
Aaron Anderson	2291
Yashaswini Ayithi	1166
Angela Chavez	1087
John Cissik	1003
Pete Daniels	1400
Bobby George	1100
Paul Goodspeed	1714
Del McClure	1973
Ansel Lee Metz	1300
Bruce Moskowitz	1677
Heath Nagle	1100
Luis Nunez	1574
Freely Schwam	1118
Robert Te Vrucht	1981

See page 109 for Grand Prix Standings

CCLA RATING CHART

rating difference	high wins	low wins	draw
0-19	16	16	0
20-39	15	17	1
40-59	14	18	2
60-79	13	19	3
80-99	12	20	4
100-119	11	21	5
120-139	10	22	6
140-159	9	23	7
160-179	8	24	8
180-199	7	25	9
200-219	6	26	10
220-239	5	27	11
240-259	4	28	12
260-279	3	29	13
280 and up	2	30	14

CLASS RATINGS

2200 an up	Master
2000-2199	Expert
1800-1999	Class A
1600-1799	Class B
1400-1599	Class C
1200-1399	Class D
below 1200	Class E

TITLES*

G = Grandmaster
I = International Master
S = 2350 & up
M = 2275 & up
E = 2100 & up

*minimum 5 years membership for a title

ten years' membership

* twenty - five years' membership

** fifty years' membership

Membership News

Those of you reading *The Chess Correspondent* and enjoying correspondence chess with CCLA are our very best new member recruiters. If you know of any player — correspondence, over-the-board, foreign (email), beginner, club, etc. — please send his or her name and address to: Jerry Honn, 1154 Dayton Drive, Galesburg, IL 61401-1313 or email: jerryhonn@yahoo.com. New members are the lifeblood of any group and we can always use your help!

RATING LIST

Full Ratings List 09/30/22

Note: Only players with current games, and players who have completed games in the previous twelve months, are listed.

1475	ACEBO*	BRIAN
1378	ACOSTA	ERROL
1274	ALGERI	BRIAN
1930	AMBURN	THOMAS
1604	ANDERSON	DALE
1704	ASKVIG*	BRENT A
1907	AVERY*	BRYCE D
1166	AYITHI	YASHASWINI
1990	BAPPLE**	EDWARD C
1494	BARNETT	JOEL
1908	BAUMER	WILLIAM
1100	BEHUNIAK	DANIEL T
1404	BERGER	BYRON
1992	E BLOMQUIST*	GARY
2115	E BLUMBERG#	DAVID
1840	BOTH	ROBERT
1300	BOUDREAUX	JACK L
1912	BRAUDES#	MICHAEL
1596	BURRUS	MICHAEL L
1562	BUSH	REX C
1759	BUTLER#	MICHAEL E
1865	CACAS*	ALEX
1951	CAPRON#	MARK
1997	E CARTER*	MAURICE H
1644	CASTLE	FRANKLIN L
1751	CATANIA#	DUANE K
1744	CAVALIERE#	PETER C
1331	CHASE*	STEPHEN
1971	CHESSING	JAMES L
2036	CHIRILLO	JOHN
1703	CIVAN	ETHAN D
1809	COFER	DAVID
1592	CORBIN	JOHN
1341	CREECH	JOHN
1357	CUYKENDALL	NEIL D
1301	CZEIZINGER	THOMAS
1400	DANIELS	PETE
1810	DAVEN#	JEFFREY J
2015	DEAN#	MARK E
1699	DOLAN	BRUCE
1100	DOMINGUEZ	RENATO
1461	ETTINGER*	HERBERT
1902	EVANS*	STAN
1601	FISHER*	ARTHUR W
1771	FLYNN#	MICHAEL T
1300	FREEMAN	WILLIE
1553	FRENCH	JEFFREY K
1647	GALLAGHER	GARY D
1254	GALLOWAY	CARL
2075	GANEM*	JOSEPH
1711	GERBER**	DAVID

1714	GOODSPEED	PAUL E
1323	GRAUPE	ADAM S
1214	GRAUPERA*	CARLOS
1785	GRECO*	TOM
2066	GREINER	TED
1530	GUNNING	EDWARD
1588	HADLEY	DOUGLAS R
1442	HAINES	JOHN
1539	HARRIS	JARROD
2054	HENDERSON	SCOT
1947	HEY	BRIAN
2014	I HICKMAN**	HERBERT
1428	HODGKINS#	NEIL C
1849	HOLMER#	ARTHUR E
2025	E HOLMES*	ROSS A
2211	E HONN**	JERRY E
1801	HUFFSTATLER	VICTOR A
1659	HUSTON	MARK
1661	ISHLER	MARK
1987	IZARD #	CONNOR
1732	JATKOWSKI	STEPHEN A
1063	JIMENEZ	JOSE
1226	JOHNSON	RICHARD L
1637	JOHNSON	STEVEN D
1756	KALFAS*	RICHARD B
1997	E KATREIN**	MATTHEW R
2200	KING	ALEXANDER
1688	KLEINE#	LARRY
1720	LAAMAN#	THOMAS
2055	M LAMECH*	LEV
1700	LAUFER	BERNHARD
1200	LEWIS	CHRISTOPHER
1558	LUOMA#	EVERETT
1400	LUPSHA	PETER
1211	MALONE	STEVE
1680	MANN	WALLACE
1300	METZ	ANSEL L
1200	MILLER	MAHLON A
1477	MOCARSKI	PAUL J
1961	MODES*	DANIEL
1711	MODESITT*	JAMES W
1494	MROZINSKI	MARK D
1973	MCCLURE	DEL
1655	MCDUFFIE	DAVID
2211	E MCKELLOP*	THOMAS
1505	MCLAUGHLIN**	EDWARD J
2300	E MCLAUGHLIN	JAMES F
2204	E MCLAUGHLIN#	RICHARD F
1965	NACE#	CHARLES
1732	NICHOLAS	MARK
1574	NUNEZ	LUIS
1453	NURMI*	RONALD R
2103	E O'KEEFE*	MICHAEL
1977	PATES	CLIVE
1841	RAY	DOUGLAS
1687	REGAN	DAVID
1400	RILEY	KENNETH
1209	RITZMANN	ANDREW

1568 ROUSE LAMONT
 1288 SANCHEZ# DAVID A
 1432 SANDORA JOHN M
 1500 SANTUCCI DANIEL
 1680 SARHAGE# JOHN T
 1700 SCHICK PHILLIP A
 1889 SCHOENWALD IRA
 1579 SCHUTTENHELM LANCE
 1118 SCHWAM FREELY
 1919 E SHANNON** PAUL D
 1545 SIEGFRIED# WILL
 2006 SILVERMAN ROBERT
 1395 SIMONSON# JAY L
 1721 SMAIL# JOHN
 1577 SMILEY* WILLIAM
 1136 SMITH DANIEL W
 1714 SMITH# JASON A
 2088 E SMOLENSKY* RANDY
 2118 E SOMERS# MIKE
 1664 SPANGLER ROY
 2040 M STERN* ALAN
 1702 STEVENS# DANIEL L
 1996 STEWART DOUGLAS
 1809 STEWART SCOTT
 1687 STONE JERRY P
 1848 STRELECKY* RICHARD E
 1593 SZCZESNIAK* R A
 1856 TAYLOR* BOBBY C
 1444 TAYLOR* RONALD D
 1923 TEDESCO MATTHEW
 1981 TE VRUCHT ROBERT
 1585 THOMAS# GERALD K
 1826 THOMMEN JOHN
 1587 TOWERY BRYAN
 2029 TRIPP GLENN
 1205 VAN TUYL MARK
 1412 VECCHIO RALPH J
 1944 VETTERLEIN DAVID
 1500 WADE DON
 1904 WALTON JOHN
 1840 WATSON# HARVEY E
 1616 WEIMER DENNIS
 1943 WHEATLEY# DANIEL D
 1279 WILLIAMS# RUFUS
 1743 WILLIAMSON# DAVID A
 1540 WOLFF NICHOLAS
 1968 E WOODFIELD# RANDALL B
 1653 WRIGHT JASON
 2087 YOUNG* WILLIAM C
 1839 ZARGES# RONALD

ADVANCED CHESS RATING LIST

2107M BLECHAR MICHAEL
 2249M CALIGUIRE JOHN
 2346 DIVANBAIGYZAND MEHRAN
 2296 S EDWARDS KEN
 2223 HAASE PHILIP
 2232 HARRIS TIMOTHY
 2064 KAPLAN SUSIE
 2077 MOUJAN PABLO
 2194 OWENS JOHNNY
 2233 PERKINS KELE
 2034 WEISER ROBERT

CCLA TEAM CHAMPIONSHIP

L11049
 CACAS* A 1 SARHAGE# J
 L11049
 SARHAGE J WITHDRAWS
 L11059
 CASTLE F 1 KALFAS* R

SOCIAL CHAMPIONSHIP

M90019
 SIMONSON# J 2(F)STEVENS# D
 SMILEY* W 2(F)SIMONSON# J
 M10011
 ASKVIG* B 1 GALLAGHER G
 ASKVIG* B 2 SZCZESNIAK*
 GALLAGHER G 2 SZCZESNIAK*
 M10031
 GALLAGHER G 1(A) SARHAGE# J
 SARHAGE J WITHDRAWS
 SMILEY* W 1 GALLAGHER G
 M20021
 BARNETT J WITHDRAWS
 M20031
 BARNETT J WITHDRAWS

RESULTS

Results for the period 7/1 - 9/30/22

CHALLENGE MATCHES

C02009 LAMECH* L 1 WOODFIELD#
 C21005 LAMECH* L 2 SPANGLER R
 C21011 LAMECH* L 1 NACE# C

NORTH AMERICAN

E00019
 BOTH R 1(A) SPANGLER R
 BOTH R 1/2(A)WOODFIELD#
 LAMECH* L 1/2 STERN* A
 STERN* A 1 WOODFIELD# R

GN CHAMPIONSHIP

G90019 CORBETT W WITHDRAWS
 G00021 CACAS* A 1 MODESITT*
 G10011 STONE J 1 BUTLER# M
 G10031 CORBETT W WITHDRAWS
 G10041 CHESSING J 1 CACAS* A
 G20011 NACE# C 1/2 BUTLER# M

LEADERSHIP

H00029
 DAVEN# J 1 GALLAGHER G
 H10019
 HOLMER# A 1/2 HEY B
 HOLMER# A 1/2 IZARD # C
 IZARD # C 1 CARTER* M
 LAMECH* L 1 CARTER* M
 LAMECH* L 1/2 HOLMER# A
 SMOLENSKY* R 1 HOLMER# A
 H10019
 CORBETT W WITHDRAWS

SERVER

S10530
 BLUMBERG D 1/2 TRIPP G
 GRECO* T 1 WHEATLEY# D
 S10531
 AVERY* B 1 CARTER* M
 BLUMBERG# D 1 AVERY* B
 BLUMBERG D 1/2 AVERY* B
 BLUMBERG D 1 CARTER* M
 BLUMBERG D 1(A) SHANNON**
 BLUMBERG D 1/2(A) SHANNON**
 BLUMBERG# D 2 SILVERMAN R
 CARTER* M 1/2 SILVERMAN R
 SILVERMAN R 1 CARTER* M
 S10532
 MANN W 1 GRECO* T
 MANN W 1 SIEGFRIED# W
 S22002
 SHANNON** P 1/2(A) SILVERMAN
 SILVERMAN R 1(A) SHANNON**
 SILVERMAN R 1 TRIPP G
 SMOLENSKY* R 1/2 SILVERMAN R
 S22003
 STRELECKY* R 1 LAAMAN# T
 S22004
 MANN W 1 SMITH# J
 SCHOENWALD I 1 NICHOLAS# m

Renew your CCLA
 membership online at

www.serverchess.com

S22005
 ANDERSON D 1 MCLAUGHLIN**
 ANDERSON D 1 SIEGFRIED# W
 ANDERSON D 1 SMILEY* W
 CATANIA# D 1 ANDERSON D
 MCLAUGHLIN** E 1/2 SIEGFRIED#
 MCLAUGHLIN** E 1 SMILEY* W
 SIEGFRIED# W 1/2 SMILEY* W
 SMILEY* W 1 ROUSE L
 S22006
 GUNNING E 1 WILLIAMS# R
 S22007
 SIMONSON# J 1 HODGKINS# N
 SIMONSON# J 1 WILLIAMS# R
 S22010
 CATANIA# D 1 GRECO* T
 CATANIA# D 1 MANN W
 CATANIA# D 1 SMILEY* W
 GRECO* T 1/2 CATANIA# D
 GRECO* T 2 MANN W
 GRECO* T 2 SMAIL# J
 GRECO* T 1 SMILEY* W
 MANN W 1 CATANIA# D
 SMAIL# J 1(F)MANN W
 SMAIL# J 2 SMILEY* W
 SMILEY* W 1 CATANIA# D
 SMILEY* W 1 MANN W
 S22011
 GUNNING E 2 HARRIS J
 HARRIS J 1 HODGKINS# N
 HODGKINS# N 1 ROUSE L
 ROUSE L 2 GUNNING E
 S22012
 ACEBO* B 1 BURRUS M
 ACEBO* B 2 SANCHEZ# D
 HADLEY D 1 BURRUS M
 HADLEY D 1 SANCHEZ# D
 S22013
 CUYKENDALL N 2 ALGERI B
 SANDORA J 2 ALGERI B
 SANDORA J 2 CUYKENDALL
 S22014
 CREECH J 1 RITZMANN A
 S22016
 SANDORA J 1/2 CREECH J
 SANDORA J 1 CREECH J
 S22017
 SHANNON, P WITHDRAWS
 YOUNG, W C WITHDRAWS
 S22018
 AVERY* B 1/2 SCHOENWALD
 AVERY* B 2 SMAIL# J
 AVERY* B 1 SMILEY* W
 AVERY* B 1 STRELECKY* R
 SCHOENWALD I 1/2 AVERY* B
 SCHOENWALD I2 SMILEY* W
 SCHOENWALD I1 STRELECKY* R
 SMAIL# J 2 SMILEY* W

STRELECKY* R 1 AVERY* B
 STRELECKY* R 1 SMAIL# J
 S22019
 ANDERSON D 1/2 CATANIA# D
 ANDERSON D 1 SMILEY* W
 ANDERSON D 2 SMITH# J
 CATANIA# D 1/2 ANDERSON D
 CATANIA# D 2 HADLEY D
 CATANIA# D 1 SMILEY* W
 SMITH# J 1 HADLEY D
 SMITH# J 1/2 HADLEY D
 SMITH# J 2 SMILEY* W
 S22020
 ACEBO* B 2 SANCHEZ# D
 ACEBO* B 1 TAYLOR* R
 HODGKINS# N 2 SANCHEZ# D
 SIMONSON# J 1 TAYLOR* R
 TAYLOR* R 1 ACEBO* B
 TAYLOR* R 2 HODGKINS# N
 TAYLOR* R 1 SANCHEZ# D
 TAYLOR* R 1(F)SIMONSON# J
 S22021
 CREECH J 1 JIMENEZ J
 CREECH J 1 SMITH D
 CUYKENDALL 2 JIMENEZ J
 CUYKENDALL 2 SMITH D
 SMITH D 2 JIMENEZ J
 S22023
 CATANIA# D 2 JATKOWSKI S
 CATANIA# D 1 STRELECKY* R
 STRELECKY* R 1 CATANIA# D
 STRELECKY* R 2 JATKOWSKI S
 S22024
 SMITH# J 1 KLEINE# L
 SMITH# J 1/2 SMAIL# J
 SMITH# J 1 SMAIL# J
 SMAIL# J 1 KLEINE# L
 S22026
 NURMI* R 1 ANDERSON D
 TAYLOR* R 1/2 NURMI* R
 TAYLOR* R 1 NURMI* R
 S22027
 VAN TUYL M 1 SANCHEZ# D
 S22027
 CUYKENDALL 2 VAN TUYL
 SANCHEZ# D 1 VAN TUYL M
 SANCHEZ# D 1 WILLIAMS# R

VAN TUYL M 1 SMITH D
 VAN TUYL M 1 WILLIAMS# R
 WILLIAMS# R 1 SANCHEZ# D

ADVANCED CHESS

X22001
 HAASE P 1/2 EDWARDS KEN
 X22019
 EDWARDS K 1/2 MOUJAN P
 EDWARDS K 1/2 OWENS J
 HARRIS T 1/2 MOUJAN P
 HARRIS T 1/2 OWENS J
 MOUJAN P 1/2 EDWRADS K
 MOUJAN P 1/2 HARRIS T
 OWENS J 1/2 HARRIS T

169 RESULTS ON FILE

Readers' Games... Continued from page 103

34. .. Rdd2

But it is too late. The Black rooks will win material and the game.

35. Rd1 Re2+

This check is an important step. 35. ... Rxf2 allows the White rook on d1 to check with 36. Rd8+ and attack the Black pawn on g7 with 37. Rd7.

36. Kf1 Rxf2+ 0-1

After 37. Kg1 (not 37. Ke1, 37. ... Rce2#) Stockfish shows a possible continuation: 37. ... Rfd2 38. Rxd2 Rxd2 39. a4 Kh7 40. axb5 axb5 41. c4 bxc4 42. bxc4 Rc2 43. Ra3 h5 44. g3 Rxc4 45. Ra7 Rd4 46. Rc7 c4 0-1.

A very interesting game that illustrates how a positional defect can suddenly come to life and change the balance of the game.

BEST GAMES ENTRIES NEEDED!

Entries to the 2022 Best Games Contest should be sent to Bryce Avery, Avery Enterprises, Inc., 3084 Blue Quail Court, Grand Junction CO 81504. Email: bda@averyenterprises.net. Please submit only games played in CCLA events and include the section number. Games should be completed in 2022. No more than three games per person. Deadline: January 31, 2023.

Chess Correspondent Annual Index

ARTICLE INDEX

Article	Author	Page
2021 Best Games Contest		1
Adventures in Expertland	Avery	96
Are Opening Books Overrated?	Carter	60
Best Games Contest Winners		31
CCLA Rules of Play (Postal and Email Chess)		21
CCLA Rules of Play (Server Chess)		17
Chess Collector, The	Carter	4
Correspondence Masters (1835 - 1978)	Honn	59
Elimination of First-Class Mail for Magazine Delivery		59
GM Jon Edwards - 32nd World Champion		85
Grand Prix Contest		11, 76
Grand Prix Final Standings		49
In Memoriam		76
Knight and Pawn Vs Knight Endgames	Holmer	34
President's Message		31, 87
Queen & Pawn vs Queen Endgames	Holmer	63
Ratings and Results		14, 50, 77, 105
Readers' Games		7, 42, 65, 98
Selected Endgames of Capablanca	Holmer	29
T. D. Reports	Honn	13, 49, 76, 104
Tales of the Chessboard	Carter	32
Thank You CCLA Donors		87
Treasurer's Report		31
What's the best move?	Holmer	3, 48, 74, 88
When an extra central pawn makes the difference	Holmer	57

PLAYER INDEX

(Player in caps had white)

Player	Score	Opponent	ECO Code	Page
Adams	0	KASPAROV	C88	35
Alekhine	0	CAPABLANCA	D52	40
ANDERSON	0	Ishler	B92	98
ASVIG	0	Mann	C68	99
AVERY	1	Smail	A83	41
AVERY	1	Silverman	B51	96
AVERY	0	Blumberg	A59	96
AVERY	1	Shannon	C16	97
Berger	0	TAYLOR	D34	69
Blomquist	0	IZARD	A29	41
BLOMQUIST	1	Blumberg	A03	42
Blumberg	0	BLOMQUIST	A03	42
Blumberg	1	HENDERSON	A46	43
Blumberg	1	AVERY	A59	96
BRANTON	1	McLaughlin	E90	6
Capablanca	1	NIMZOWITSCH	C50	29
Capablanca	1	WINTER	C49	38
CAPABLANCA	1	Tartakower	A84	38
CAPABLANCA	1	Alekhine	D52	40
CATANIA	0.5	Zarges	B22	101

Cofer	0	STEWART	C06	41
Cofer	0	DOUGLAS	C06	65
DOUGLAS	1	Cofer	C06	65
EDWARDS	0.5	Osipov	C26	91
Fisher	1	GUNNING	C64	9
FISHER	0.5	Towery	B13	10
GRECO	1	Ishler	B40	73
GUNNING	0	Fisher	C64	9
HENDERSON	0	Blumberg	A46	43
HENDERSON	0	Pates	B07	44
HODGKINS	0	Sandora	D35	100
Holmes	0	MCKELLOP	B32	41
HUSTON	1	Smail	A91	11
Huston	0	THOMAS	C01	66
ISHLER	0	Wright	B17	8
Ishler	0	GRECO	B40	73
Ishler	1	ANDERSON	B92	98
IZARD	1	Blomquist	A29	41
IZARD	1	Smolensky	C47	45
KASPAROV	1	Adams	C88	35
KLEINE	0	McLaughlin	D06	5
KLEINE	1	Schoenwald	A57	16
Lasker	0	RUBINSTEIN	D30	57
MANN	1	Schoenwald	C41	7
MANN	1	Rouse	B01	71
Mann	1	ASVIG	C68	99
MCKELLOP	1	Holmes	B32	41
McLaughlin	1	KLEINE	D06	5
McLaughlin	0	BRANTON	E90	6
McLaughlin	0.5	WOODFIELD	C69	67
NIMZOWITSCH	0	Capablanca	C50	29
Osipov	0.5	EDWARDS	C26	91
Pates	1	HENDERSON	B07	44
ROUSE	0.5	Strelecky	A00	70
Rouse	0	MANN	B01	71
RUBINSTEIN	1	Lasker	D30	57
Sandora	1	HODGKINS	D35	100
Schoenwald	0	MANN	C41	7
Schoenwald	0	KLEINE	A57	16
Shannon	1	STRELECKY	A40	31
Shannon	0	AVERY	C16	97
SHEAFFER	1	Strelecky	A06	46
Silverman	0	AVERY	B51	96
Smail	0	HUSTON	A91	11
Smail	0	AVERY	A83	41
SMAIL	1	Thomas	A03	47
Smail	1	ZARGES	B01	67
Smiley	1	THOMAS	C70	103
Smolensky	0	IZARD	C47	45
Stern	0	WOODFIELD	C90	31
STEWART	1	Cofer	C06	41
STRELECKY	0	Shannon	A40	31
Strelecky	0	SHEAFFER	A06	46
Strelecky	0.5	ROUSE	A00	70

Tartakower	0	CAPABLANCA	A84	38
TAYLOR	1	Berger	D34	69
Thomas	0	SMAIL	A03	47
THOMAS	1	Huston	C01	66
THOMAS	0	Smiley	C70	103
Towery	0.5	FISHER	B13	10
WINTER	0	Capablanca	C49	38
WOODFIELD	1	Stern	C90	31
WOODFIELD	0.5	McLaughlin	C69	67
Wright	1	ISHLER	B17	8
ZARGES	0	Smail	B01	67
Zarges	0.5	CATANIA	B22	101

Grand Prix Standings

09/30/22

1. CATANIA# DUANE K	60
2. SMILEY* WILLIAM	45
3. SCHOENWALD IRA	38
4. STRELECKY* RICHARD E	38
5. HODGKINS# NEIL C	37
6. WILLIAMS# RUFUS	34
7. AVERY* BRYCE D	33
8. BLUMBERG# DAVID	28
9. SMAIL# JOHN	28
10. LAMECH* LEV	27
11. SMITH# JASON A	26
12. TAYLOR* RONALD D	25
13. CUYKENDALL NEIL D	24
14. SIMONSON# JAY L	24
15. GALLAGHER GARY D	23
16. GRECO* TOM	22
17. ANDERSON DALE	21
18. GUNNING EDWARD	21
19. BURRUS MICHAEL L	20
20. MANN WALLACE	20
21. CREECH JOHN	19
22. HADLEY DOUGLAS R	19
23. ACEBO* BRIAN	18
24. HARRIS JARROD	16
25. ROUSE LAMONT	16
26. SANDORA JOHN M	16
27. CARTER* MAURICE H	12
28. SANCHEZ# DAVID A	12
29. SILVERMAN ROBERT	12
30. VAN TUYL MARK	12
31. CACAS* ALEX	11
32. SMOLENSKY* RANDY	11

OPENINGS INDEX

ECO Code	Opening	Variation	Page
A00	Van Geet	General	70
A03	Bird's	Classical	42
A03	Bird's	Dutch	47
A06	Reti	Tennison Gambit	46
A29	English	Bremen	41
A40	Queen's Pawn	Englund Gambit	31
A46	Indian	Knights	43
A57	Benko	4. Nf3	16
A59	Benko Gamit		96
A83	Dutch	Staunton Gambit	41
A84	Dutch		38
A91	Dutch	Classical	11
B01	Center Counter	Modern	71
B01	Center Counter	Portuguese	67
B07	Pirc	Lion	44
B13	Caro Kann	Exchange	10
B17	Caro Kann	Modern	8
B22	Sicilian	Alapin	101
B32	Sicilian	Labourdonnais	41
B40	Sicilian	French	73
B51	Sicilian	Rossolimo	96
B92	Sicilian	Najorf	98
C01	French	Exchange	66
C06	French	Tarrasch	65
C06	French	Tarrasch	41
C16	French	Winawer	97
C26	Vienna		91
C41	Philidor	Lion	7
C47	Four Knights	Belgrade Gambit	45
C49	Four Knights	Nimzowitsch	38
C50	Giuoco Pianissimo	Canal	29
C64	Ruy Lopez	Cordel	9
C68	Ruy Lopez	Exchange	99
C69	Ruy Lopez	Exchange	67
C70	Ruy Lopez	Arkangelsk	103
C88	Ruy Lopez	Closed	35
C90	Sicilian	Najorf	31
D06	Queen's Gambit Declined	Marshall	5
D30	Queen's Gambit Declined		57
D34	Queen's Gambit Declined	Tarrasch	69
D35	Queen's Gambit Declined	Exchange	100
D52	Queen's Gambit Declined	Cambridge Springs	40
E90	King's Indian	5. Nf3	6

Adventures in Expertland....

Continued from page 97

Now Black's rook comes off, and White's last pawn is enough to win if he avoids knight forks.

48...Nxd3 49. Rxf6+ Kxf6 50. Rb6+ Kg5 51. Rb5+ Kg6 52. Kh4 Ne1 53. Rb6+ Kg7 54. Kh5 d3 55. g5 1-0

Solutions for

“What's the Best Move?”

On page 88

1. Zarges-Catania 38. f7+ Kf8 39. Bh6+ 1-0

2. Thomas-Burrus 32. Rb8+ 1-0

3. Burrus-Greco 33. Qg6+ 1-0

SERVER TOURNAMENTS

Time Limit: 10 moves in 30 days. CCLA full membership is required unless otherwise indicated. All games are CCLA rated. All games are played on the ICCF webserver unless otherwise indicated. Additional information and crosstables are shown on the CCLA website www.serverchess.com. Send entry fees to CCLA, 1154 Dayton Drive, Galesburg, IL 61401-1313 or visit <https://www.serverchess.com/entry.htm> to use PayPal. Players new to the ICCF server, please include your full name and the email address you want the server to use. If already registered, please include your ICCF ID#.

----- Traditional Chess (chess engines prohibited) -----

Seasonal Server Series

Entries close on February 15 (Winter), May 15 (Spring), August 15 (Summer) and November 15 (Fall). One round. No prizes. Entrants grouped by rating. Players paired as either a 7-player single round robin, or as a 4-, 5- or 6-player double round robin, so six to ten games are played depending on the number of entrants. Multiple entries permitted. Entry fee per section \$6. Time limit: 10 moves/30 days.

2023 CCLA North American Server Class Championships

The entry deadline is April 15, 2023. There are four rating classes: A, B, C and D. \$8 entry fee. \$20 first prize for each class. Time limit: 10 moves/30 days. There will be two rounds in any class that has over ten entrants.

Team Championship (odd-numbered years)

Teams consist of six players. Team and individual applications accepted. If you apply as an individual we will assign you to a team based on your rating and a team's needs. The number of divisions, teams per div. and games played per opponent depend on number of entries. Teams are assigned to divisions based on the average team rating. Each player has one or two games against opponents on his board (Board 1 plays all other Board 1 players, etc.) Time limit: 10 moves/30 days. Entry fee \$8. Entry deadline: October 1.

Gustafson Memorial

All games will be by server, with no chess engines allowed. The tournament is open to all residents of the United States, and its territories with no CCLA membership requirement and no entry fee. The prize for winning a section will be a \$20 credit that can be used only for CCLA membership dues or, for CCLA members, as entry fees to CCLA events. Section prize is split between ties. Multiple entries are not allowed. Time limit: 10 moves/30 days. Entry deadline: October 15.

----- Advanced Chess (chess engines allowed) -----

(Caution: Players must complete all Traditional Games before entering any Advanced Chess section)

2023 Quads

Open year round – sections issued when filled, but entrants will be grouped by rating. Players paired as either a 7-player single round robin, or as a 4-, 5- or 6-player double round robin, so six to ten games are played depending on the number of entrants. Multiple entries permitted. Time limit: 10 moves/30 days. Entry fee per section \$6. One round. No prizes.

2023 CCLA Server Championship

The entry deadline is April 15, 2023. Open to players rated 2000 and over. Entry fee of \$10 and prizes of \$50, \$25 and \$10 for first, second, and third place in the final round. Players paired as either a 7- or 9-player single round robin, so six to eight games are played depending on the number of entrants. Section winners and ties advance to the final round. Time limit: 10 moves/30 days.

POSTAL TOURNAMENTS

Time Limit: 10 moves in 30 days. Algebraic notation. Games may be played by email if both players agree. CCLA membership required. Send entry fees to: CCLA, 1154 Dayton Drive, Galesburg, IL 61401-1313

OPEN FOR ENTRIES ALL YEAR

The En Prise

Entry fee: \$5

Format: One round tournament with four-player sections.

Prizes: Section prize is \$10 with ties sharing the prize money.

Assignments: made as soon as four players within a 300-point rating range have entered.

ENTRY DEADLINE SEPTEMBER 16

CCLA Postal Championship (Traditional Chess)

Open to the twelve highest-rated players who enter. A minimum of 3 entrants is required or the event will not be held in that year. This is a one-round event with one game per opponent if there are seven or more players and two games per opponent if there are less than seven players.

Entry fee: \$8

Format: One round

Prizes

Championship

1st - \$50.00,

2nd - \$25.00

3rd - \$10.00

Leadership sections

1st - \$15

2nd - \$10

CCLA Leadership (Advanced Chess)

The Leadership sections are formed in order of rating. The number of players within each section may vary from four to seven, with one game per opponent for six or seven-player sections and two games per opponent for four or five-player sections. Multiple entries are NOT permitted.

Two-Game Matches

Postal or email pairings available upon request with \$3 entry fee for a two-game match - one as White and one as Black. Players must arrange their own opponents. Prisoners may not be paired with each other.

Entry Deadlines for Coming Events ..

Feb. 15, 2023 CCLA Winter Server Series

April 15, 2023 CCLA Server Championship

April 15, 2023 CCLA North American Server Class Champ.

May 15, 2023 CCLA Spring Server Series

Aug. 15, 2023 CCLA Summer Server Series

Sept. 16, 2023 CCLA Postal Championship (Traditional Chess)

Sept. 16, 2023 CCLA Leadership (Advanced Chess)

Nov. 15, 2023 CCLA Fall Server Series

Oct. 15, 2024 Gustafson Memorial

Email Games: In all of the Postal Tournaments games may be played by email if both players agree. The time limit is 10 moves in 30 days regardless of whether postcard or email is being used.

THE CHESS CORRESPONDENT

USPS 102-820, ISSN 0009-3327

1154 Dayton Drive

Galesburg, IL 61401-1313

October-December 2022, Vol. 95, No. 4

MEMBERSHIP AND SUBSCRIPTION RATES ARE:

Transmission	Electronic Mail	2nd Class Mail
ONE YEAR	\$12	\$20
TWO YEARS	\$22	\$38
THREE YEARS	\$30	\$54

Only Electronic Transmission is available for foreign mailings.

Make checks payable to CCLA, and mail to:

CCLA, 1154 Dayton Drive, Galesburg, IL 61401-1313.

Other membership information is on inside front cover.

CCLA MEMBERSHIP APPLICATION

(Please Do Not Use For Renewals)

Name _____

Street _____

City, State, Zip _____

E-mail _____

(E-mail address required for electronic magazine.)

Have you been a CCLA member before? _____

If so, approximate year you were last a member _____

Your correspondence rating in _____ (name of club) is _____

or your USCF over-the-board rating is _____.

If you have no rating, estimate your ability, from Class E (lowest) to Class A (strongest) _____,

Mail to: **CCLA, 1154 Dayton Drive, Galesburg, IL 61401-1313.**